

THE COVE

DUBAI CREEK HARBOUR

FLOOR PLANS

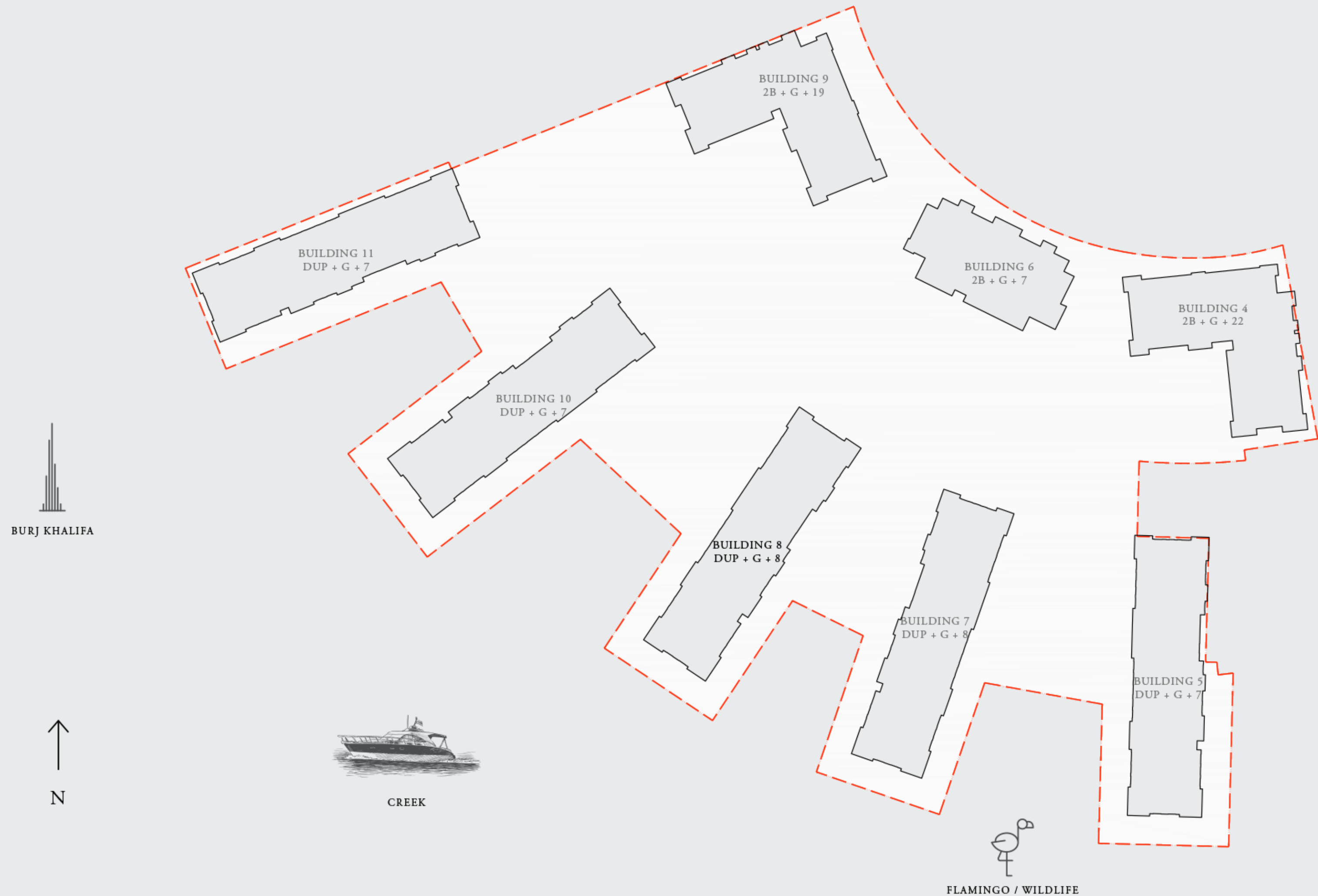
BUILDING 8

EMAAR



PROPERTY / CLUSTER NAME

MASSING PLAN



FLOOR PLAN 1. All dimensions are in imperial and metric, and measured from finish to finish excluding construction tolerances. 2. All materials, dimensions, and drawings are approximate only. 3. Information is subject to change without notice, at developer's absolute discretion. 4. Actual area may vary from the stated area. 5. Drawings not to scale. 6. All images used are for illustrative purposes only and do not represent the actual size, features, specifications, fittings, and furnishings. 7. The developer reserves the right to make revisions / alterations, at it's absolute discretion, without any liability whatsoever.

THE COVE

DUBAI CREEK HARBOUR

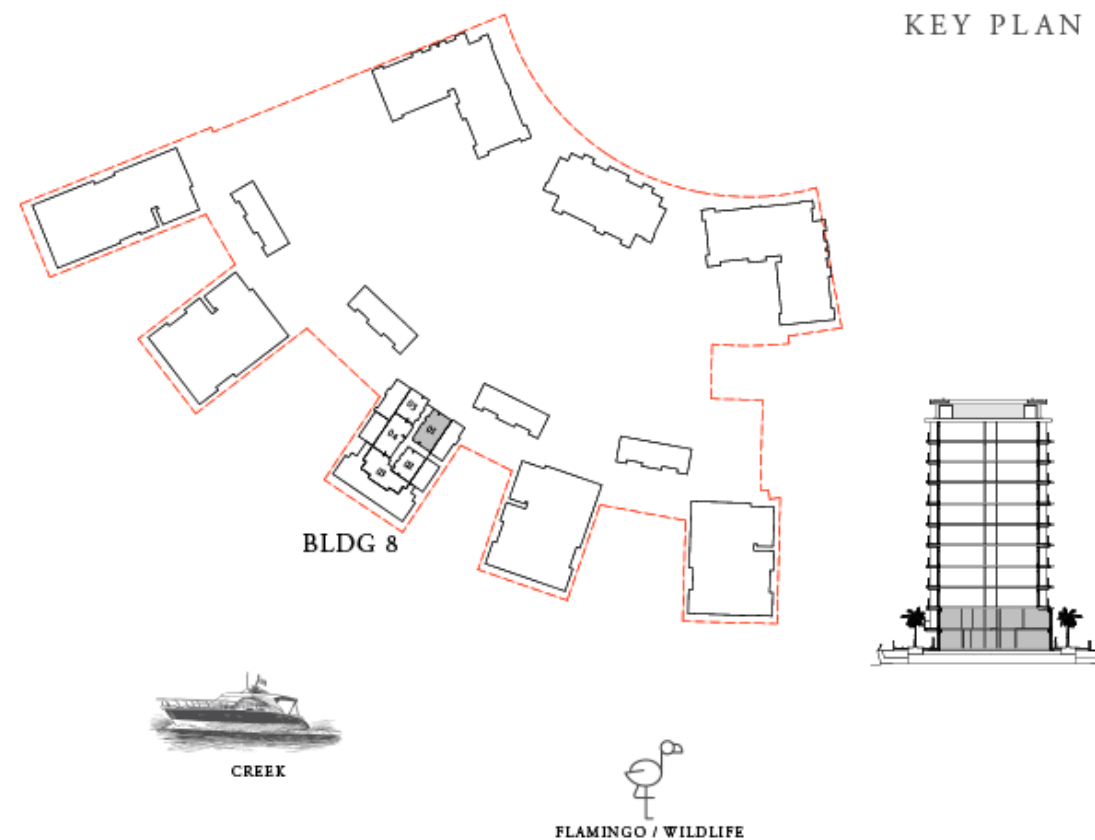
BUILDING 8 4 BEDROOM DUPLEX

LEVELS B2 & B1

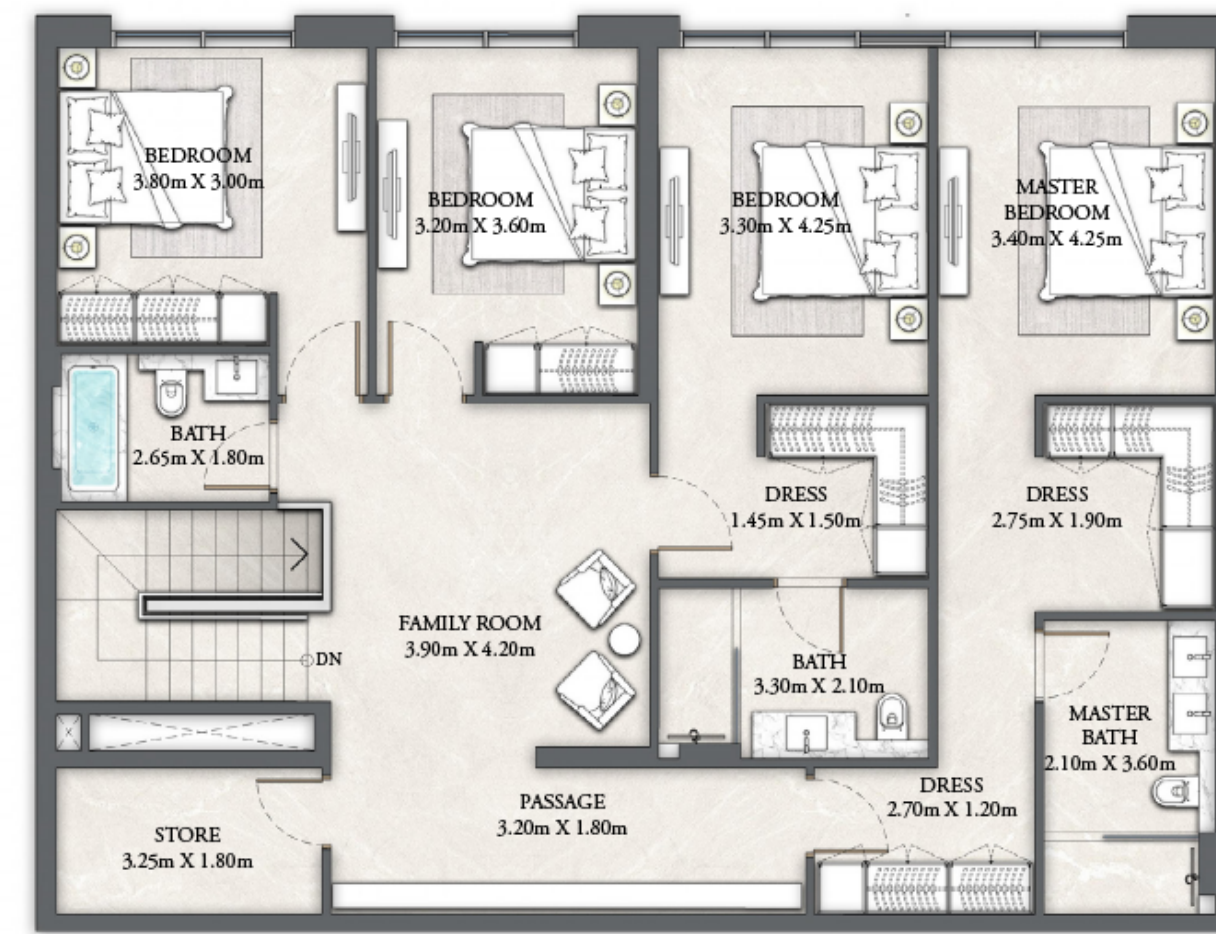
UNIT 01

SUITE AREA	2981.39 SQ.FT.	276.98 SQ.M.
BALCONY AREA	902.02 SQ.FT.	83.80 SQ.M.
TOTAL AREA	3883.41 SQ.FT.	360.78 SQ.M.

KEY PLAN



UPPER LEVEL



LOWER LEVEL



FLOOR PLAN 1. All dimensions are in imperial and metric, and measured from finish to finish excluding construction tolerances. 2. All materials, dimensions, and drawings are approximate only. 3. Information is subject to change without notice, at developer's absolute discretion. 4. Actual area may vary from the stated area. 5. Drawings not to scale. 6. All images used are for illustrative purposes only and do not represent the actual size, features, specifications, fittings, and furnishings. 7. The developer reserves the right to make revisions / alterations, at it's absolute discretion, without any liability whatsoever.

EMAAR

THE COVE

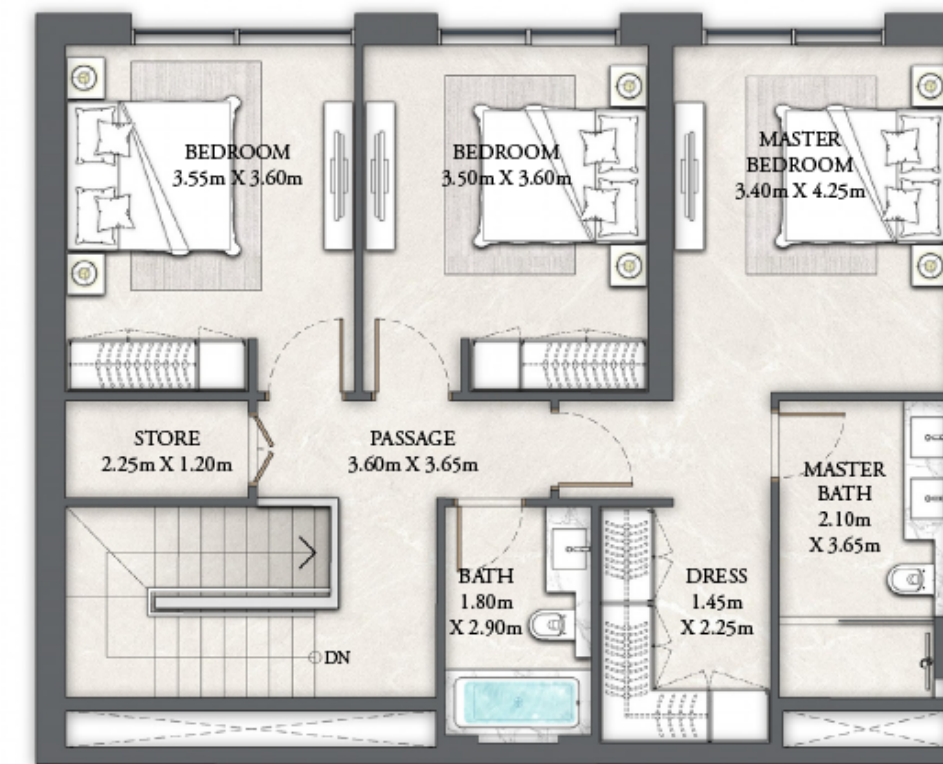
DUBAI CREEK HARBOUR

BUILDING 8 3 BEDROOM DUPLEX

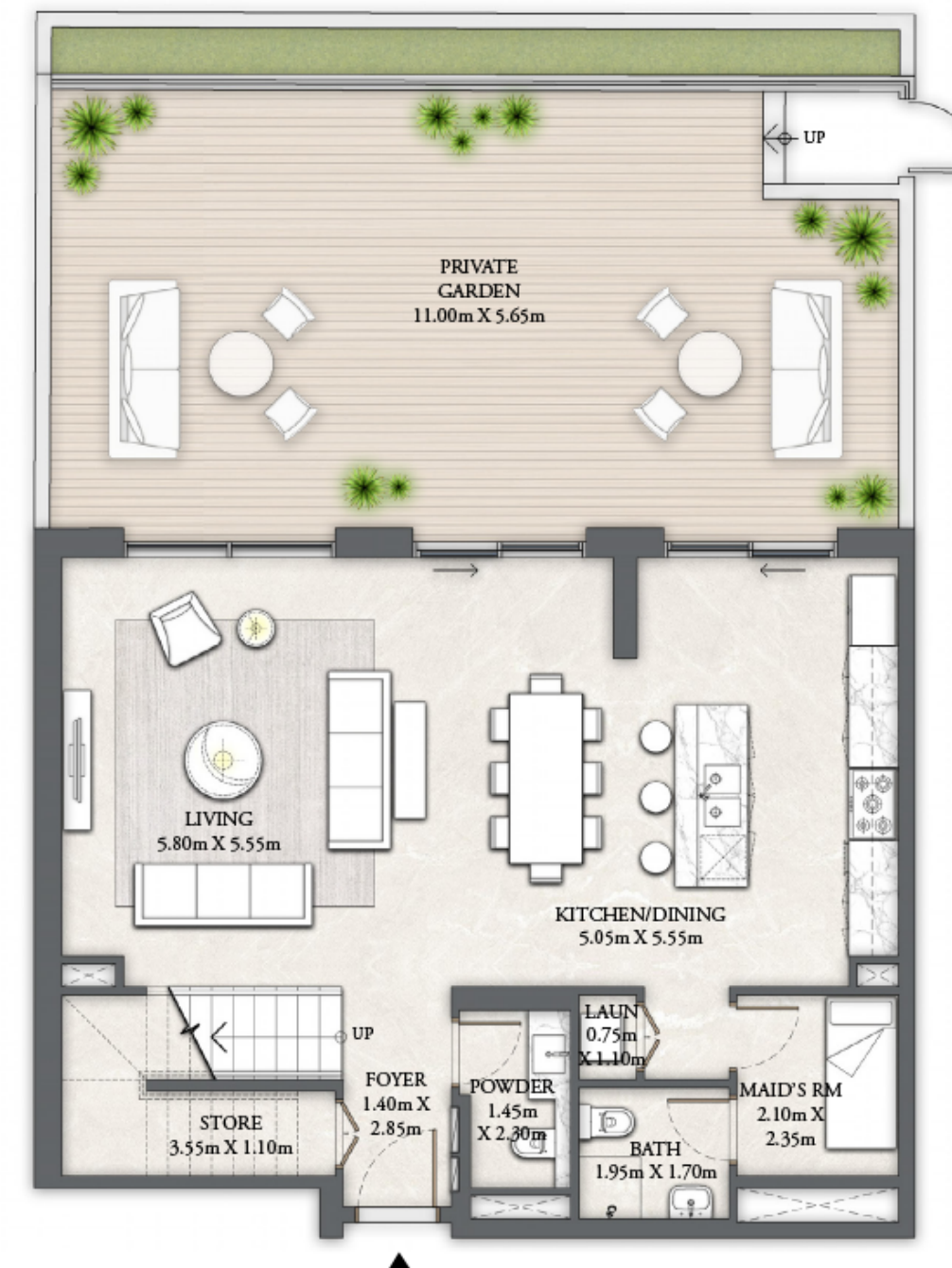
LEVELS B2 & B1

UNIT 02

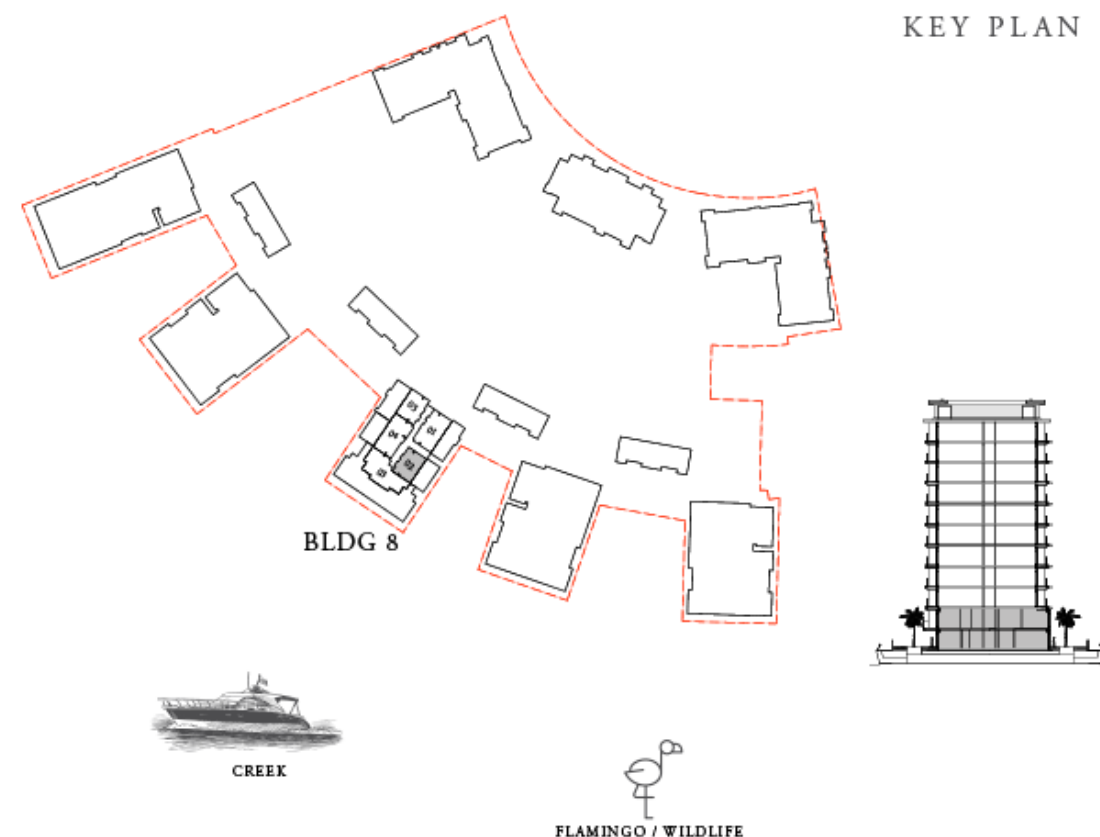
UPPER LEVEL



LOWER LEVEL



KEY PLAN



BURJ KHALIFA



N

FLOOR PLAN 1. All dimensions are in imperial and metric, and measured from finish to finish excluding construction tolerances. 2. All materials, dimensions, and drawings are approximate only. 3. Information is subject to change without notice, at developer's absolute discretion. 4. Actual area may vary from the stated area. 5. Drawings not to scale. 6. All images used are for illustrative purposes only and do not represent the actual size, features, specifications, fittings, and furnishings. 7. The developer reserves the right to make revisions / alterations, at its absolute discretion, without any liability whatsoever.

EMAAR

THE COVE

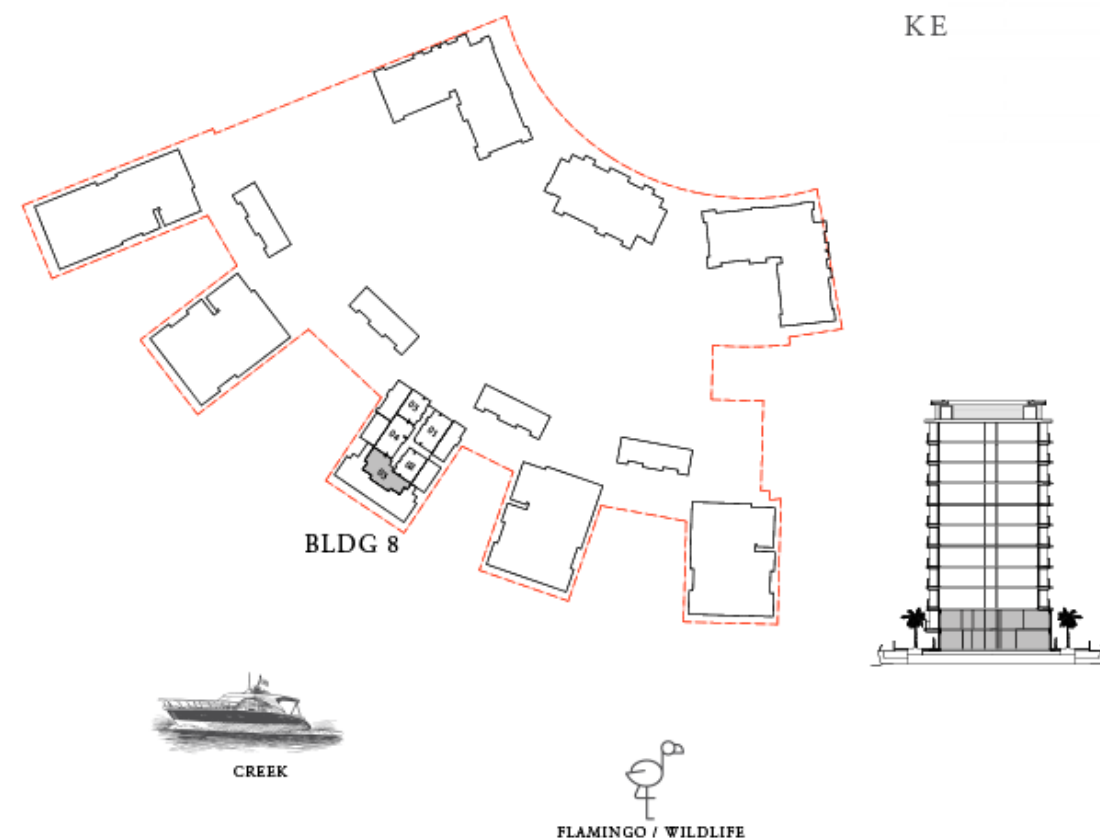
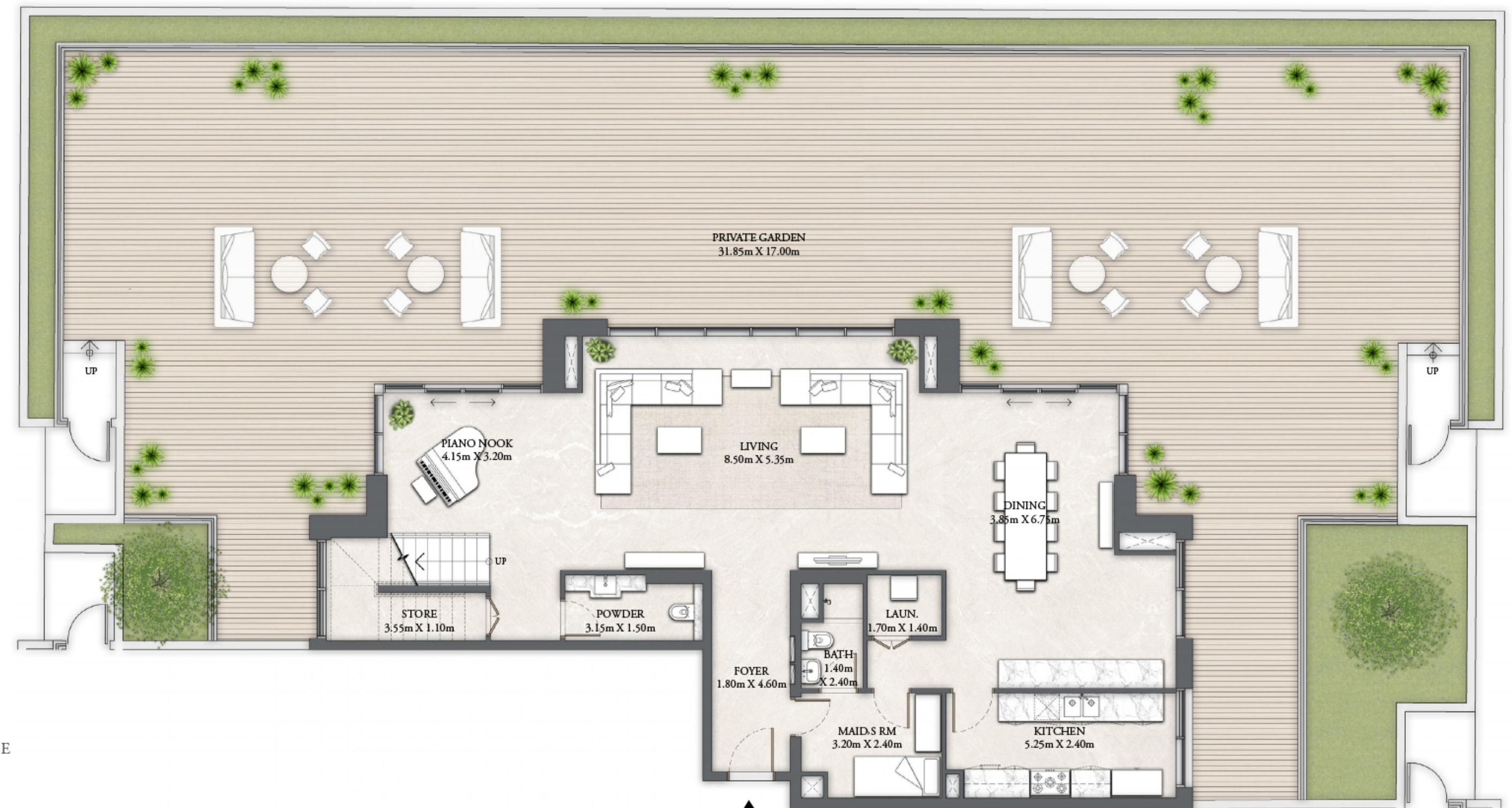
DUBAI CREEK HARBOUR

BUILDING 8 4 BEDROOM DUPLEX

LEVEL B2

UNIT 03

SUITE AREA	1650.00 SQ.FT.	153.29 SQ.M.
BALCONY AREA	3244.78 SQ.FT.	301.45 SQ.M.
TOTAL AREA	4894.78 SQ.FT.	454.74 SQ.M.



LOWER LEVEL

FLOOR PLAN 1. All dimensions are in imperial and metric, and measured from finish to finish excluding construction tolerances. 2. All materials, dimensions, and drawings are approximate only. 3. Information is subject to change without notice, at developer's absolute discretion. 4. Actual area may vary from the stated area. 5. Drawings not to scale. 6. All images used are for illustrative purposes only and do not represent the actual size, features, specifications, fittings, and furnishings. 7. The developer reserves the right to make revisions / alterations, at its absolute discretion, without any liability whatsoever.

EMAAR

THE COVE

DUBAI CREEK HARBOUR

BUILDING 8

4 BEDROOM DUPLEX

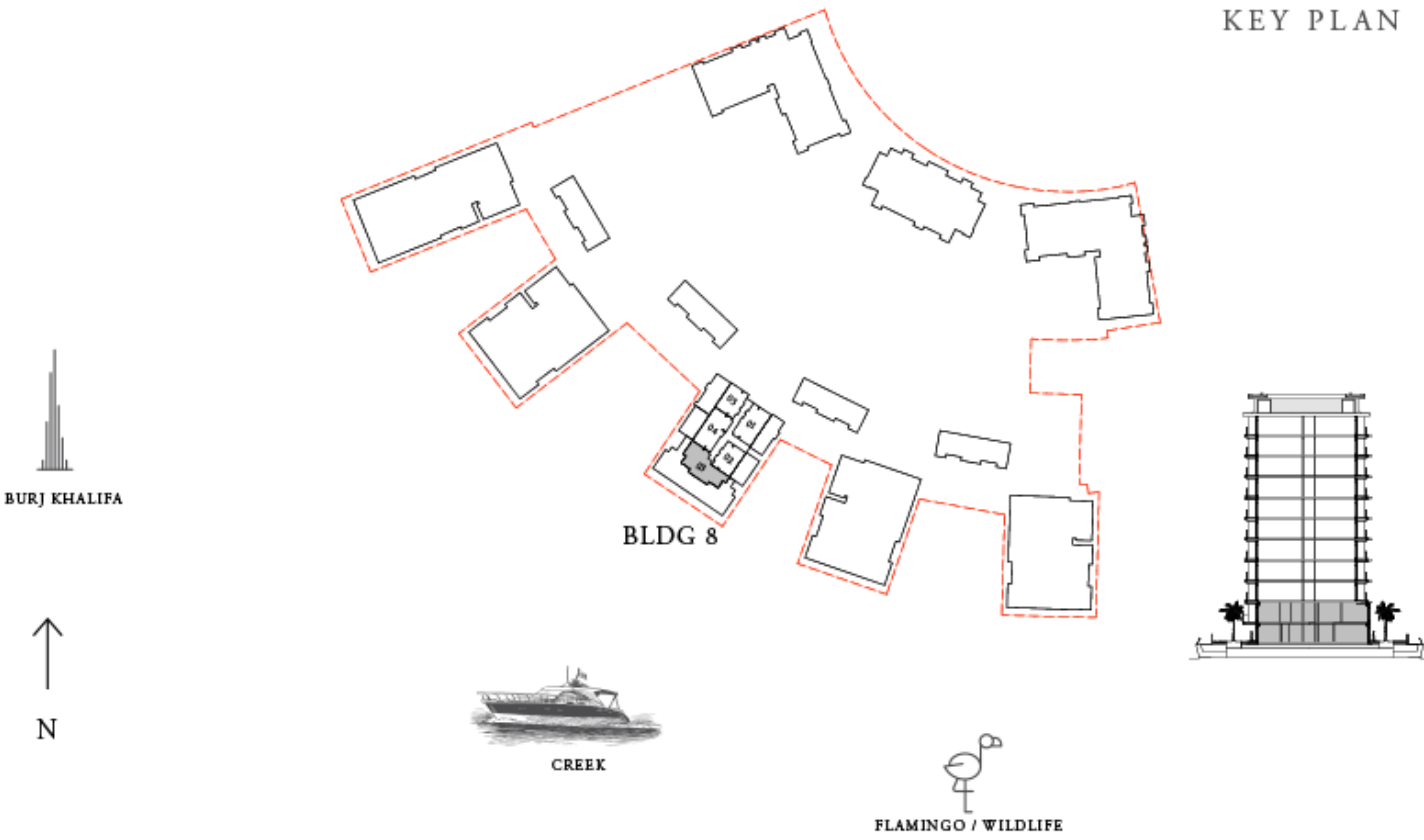
LEVEL B1

UNIT 03

SUITE AREA	1789.07 SQ.FT.	166.21 SQ.M.
BALCONY AREA	243.48 SQ.FT.	22.62 SQ.M.
TOTAL AREA	2032.55 SQ.FT.	188.83 SQ.M.
TOTAL (B1+ B2)	6927.33 SQ.FT.	643.57 SQ.M.



UPPER LEVEL



KEY PLAN

FLOOR PLAN 1. All dimensions are in imperial and metric, and measured from finish to finish excluding construction tolerances. 2. All materials, dimensions, and drawings are approximate only. 3. Information is subject to change without notice, at developer's absolute discretion. 4. Actual area may vary from the stated area. 5. Drawings not to scale. 6. All images used are for illustrative purposes only and do not represent the actual size, features, specifications, fittings, and furnishings. 7. The developer reserves the right to make revisions / alterations, at it's absolute discretion, without any liability whatsoever.

THE COVE

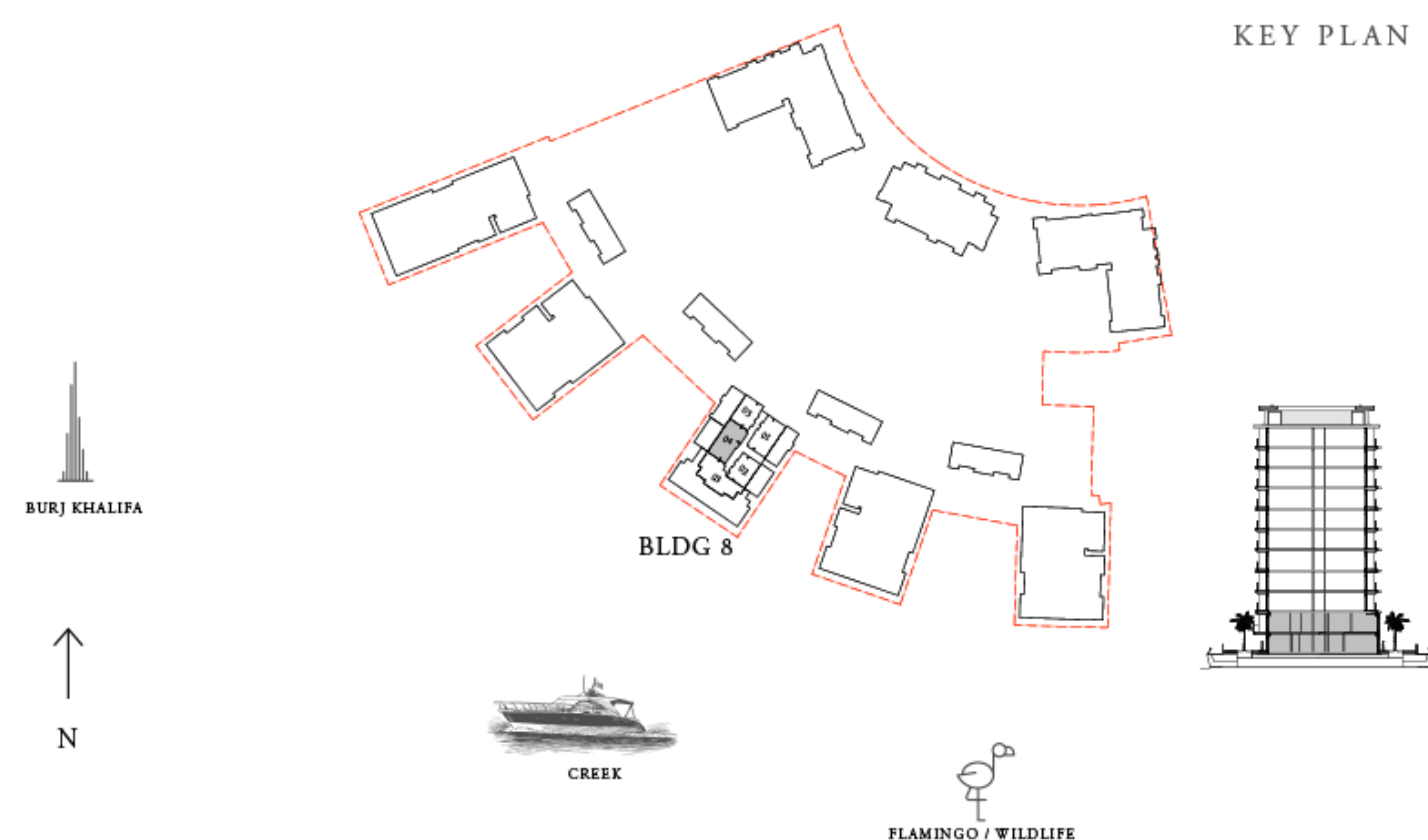
DUBAI CREEK HARBOUR

BUILDING 8 4 BEDROOM DUPLEX

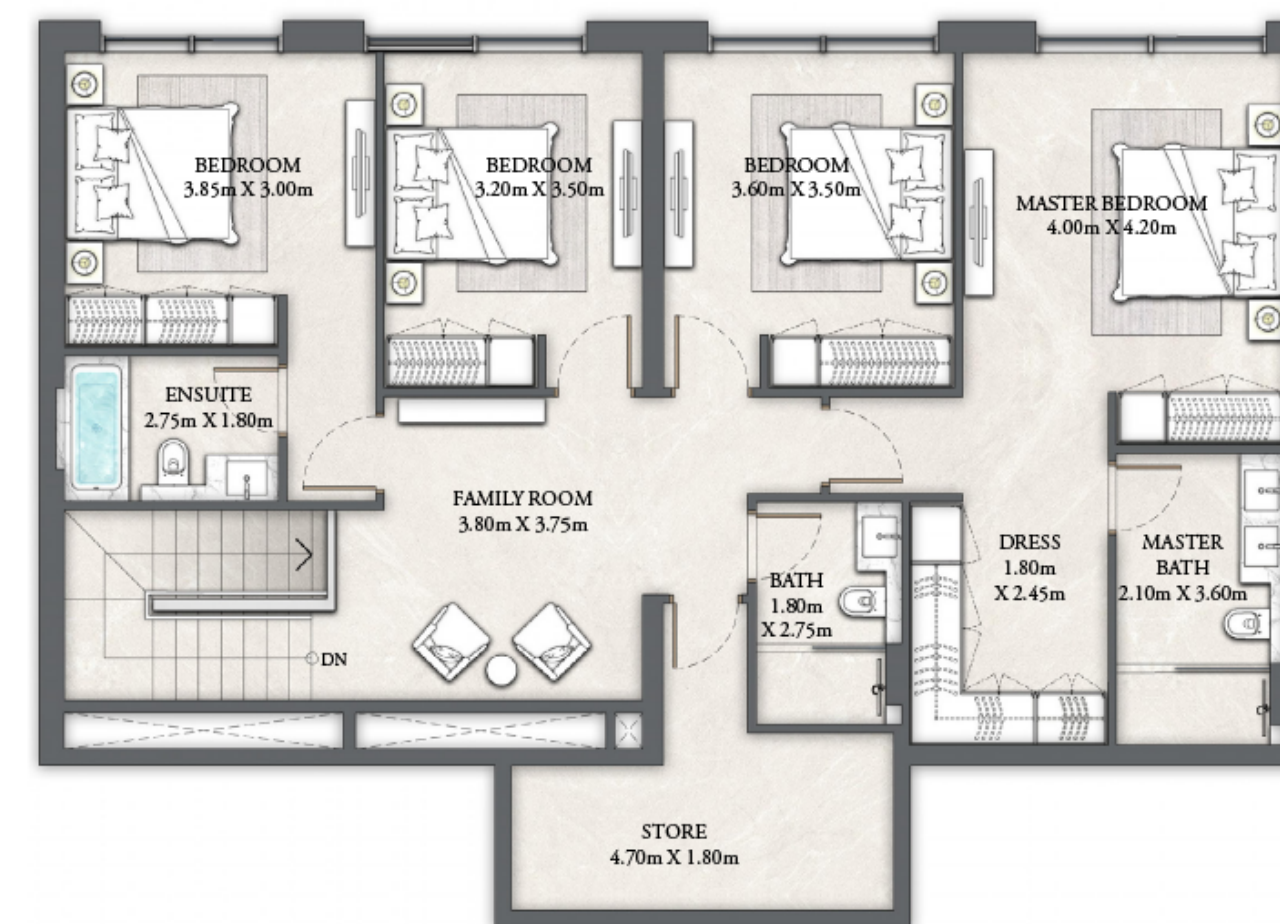
LEVELS B2 & B1

UNIT 04

SUITE AREA	2907.98 SQ.FT.	270.16 SQ.M.
BALCONY AREA	1058.63 SQ.FT.	98.35 SQ.M.
TOTAL AREA	3966.61 SQ.FT.	368.51 SQ.M.



UPPER LEVEL



LOWER LEVEL



FLOOR PLAN 1. All dimensions are in imperial and metric, and measured from finish to finish excluding construction tolerances. 2. All materials, dimensions, and drawings are approximate only. 3. Information is subject to change without notice, at developer's absolute discretion. 4. Actual area may vary from the stated area. 5. Drawings not to scale. 6. All images used are for illustrative purposes only and do not represent the actual size, features, specifications, fittings, and furnishings. 7. The developer reserves the right to make revisions / alterations, at it's absolute discretion, without any liability whatsoever.

EMAAR

THE COVE

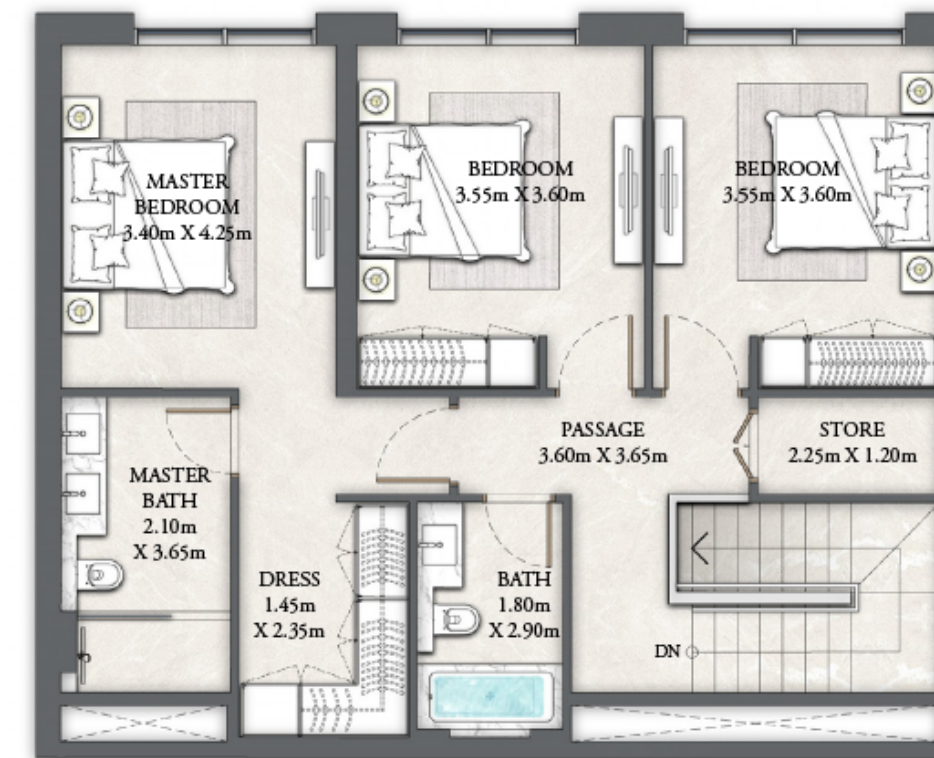
DUBAI CREEK HARBOUR

BUILDING 8 3 BEDROOM DUPLEX

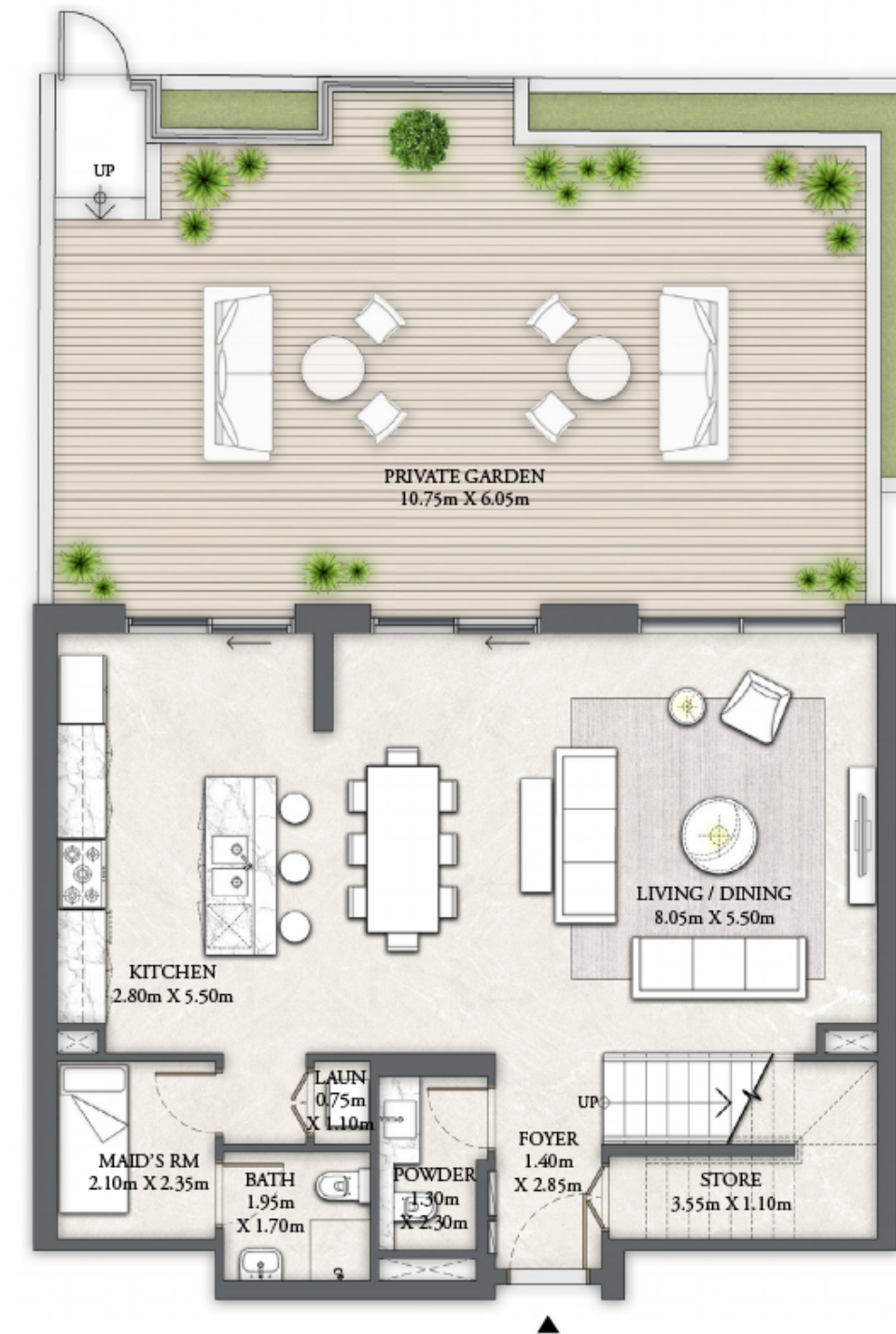
LEVELS B2 & B1

UNIT 05

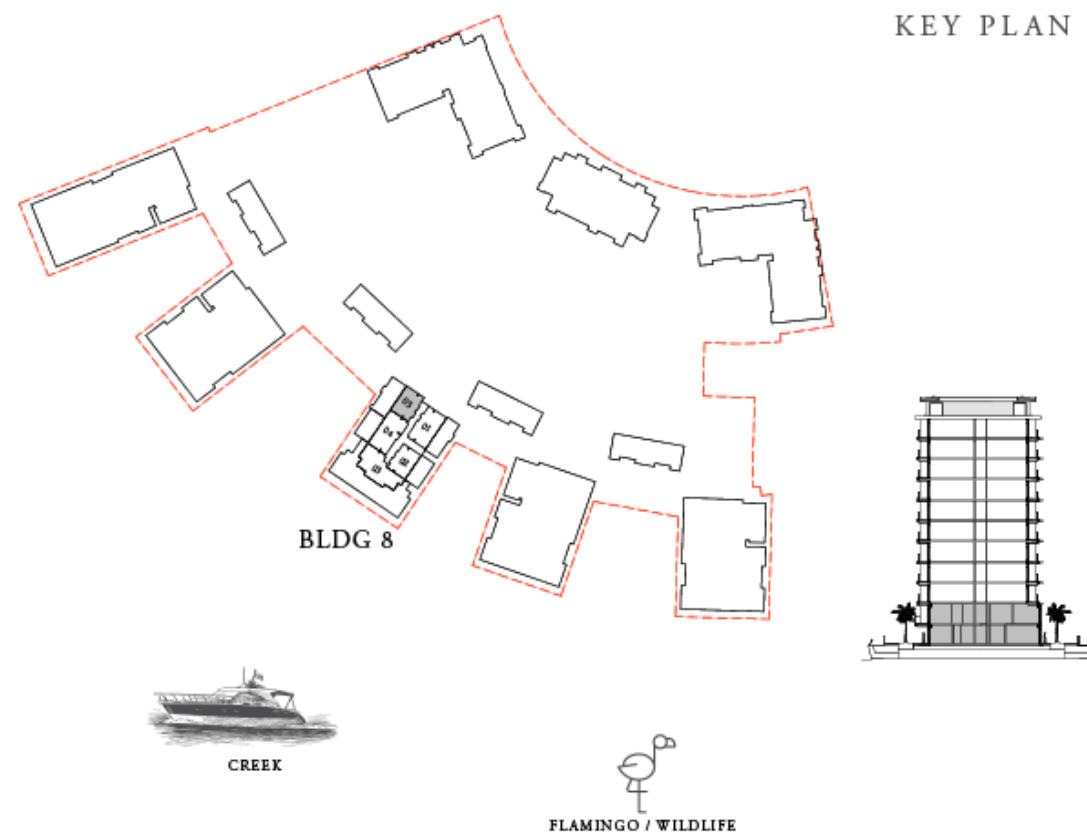
UPPER LEVEL



LOWER LEVEL



KEY PLAN



BURJ KHALIFA



N

FLOOR PLAN 1. All dimensions are in imperial and metric, and measured from finish to finish excluding construction tolerances. 2. All materials, dimensions, and drawings are approximate only. 3. Information is subject to change without notice, at developer's absolute discretion. 4. Actual area may vary from the stated area. 5. Drawings not to scale. 6. All images used are for illustrative purposes only and do not represent the actual size, features, specifications, fittings, and furnishings. 7. The developer reserves the right to make revisions / alterations, at it's absolute discretion, without any liability whatsoever.

EMAAR

THE COVE

DUBAI CREEK HARBOUR

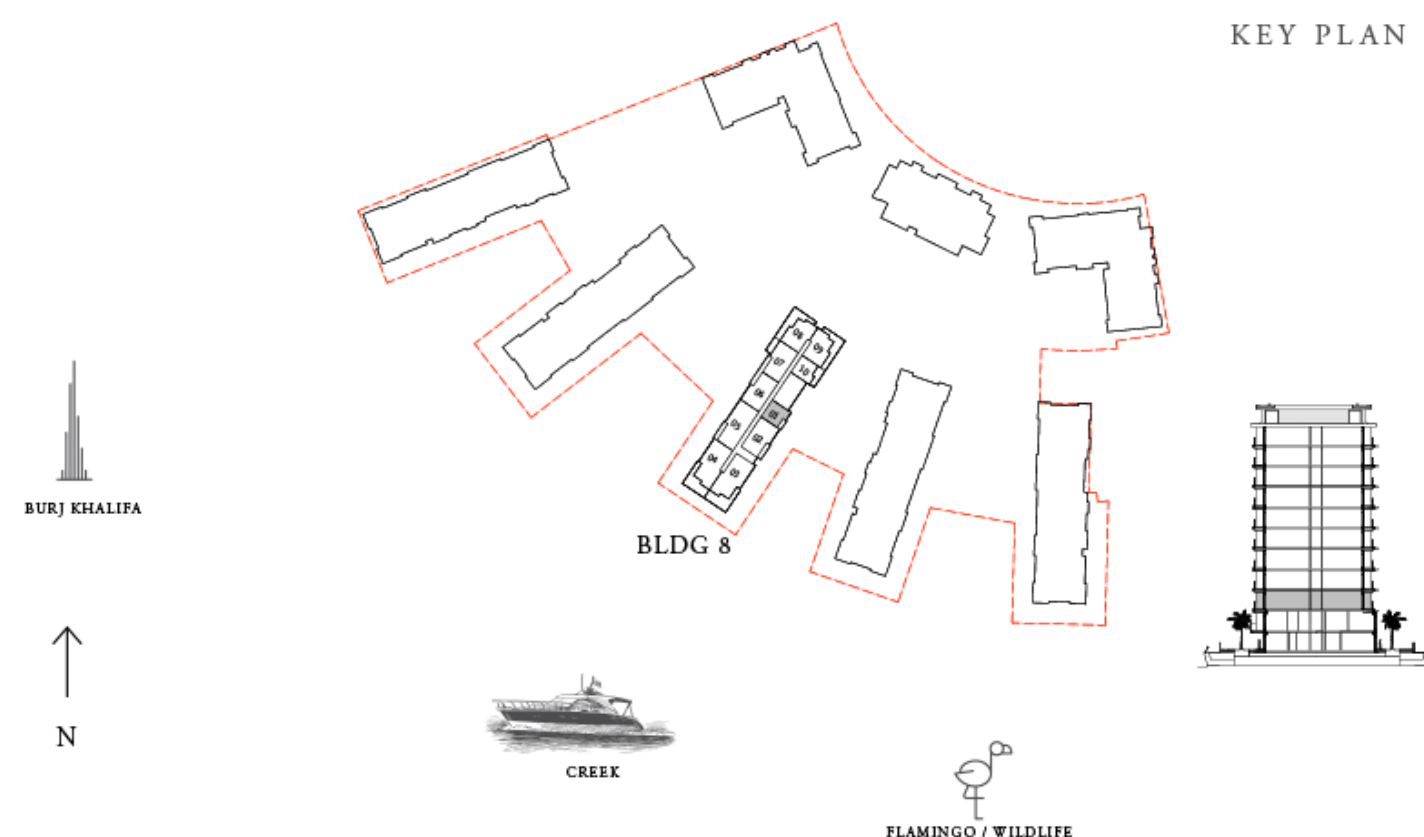
BUILDING 8 1 BEDROOM

LEVEL G

UNIT 01

SUITE AREA	695.89 SQ.FT.	64.65 SQ.M.
BALCONY AREA	91.60 SQ.FT.	8.51 SQ.M.
TOTAL AREA	787.49 SQ.FT.	73.16 SQ.M.

KEY PLAN



FLOOR PLAN 1. All dimensions are in imperial and metric, and measured from finish to finish excluding construction tolerances. 2. All materials, dimensions, and drawings are approximate only. 3. Information is subject to change without notice, at developer's absolute discretion. 4. Actual area may vary from the stated area. 5. Drawings not to scale. 6. All images used are for illustrative purposes only and do not represent the actual size, features, specifications, fittings, and furnishings. 7. The developer reserves the right to make revisions / alterations, at it's absolute discretion, without any liability whatsoever.

EMAAR

THE COVE

DUBAI CREEK HARBOUR

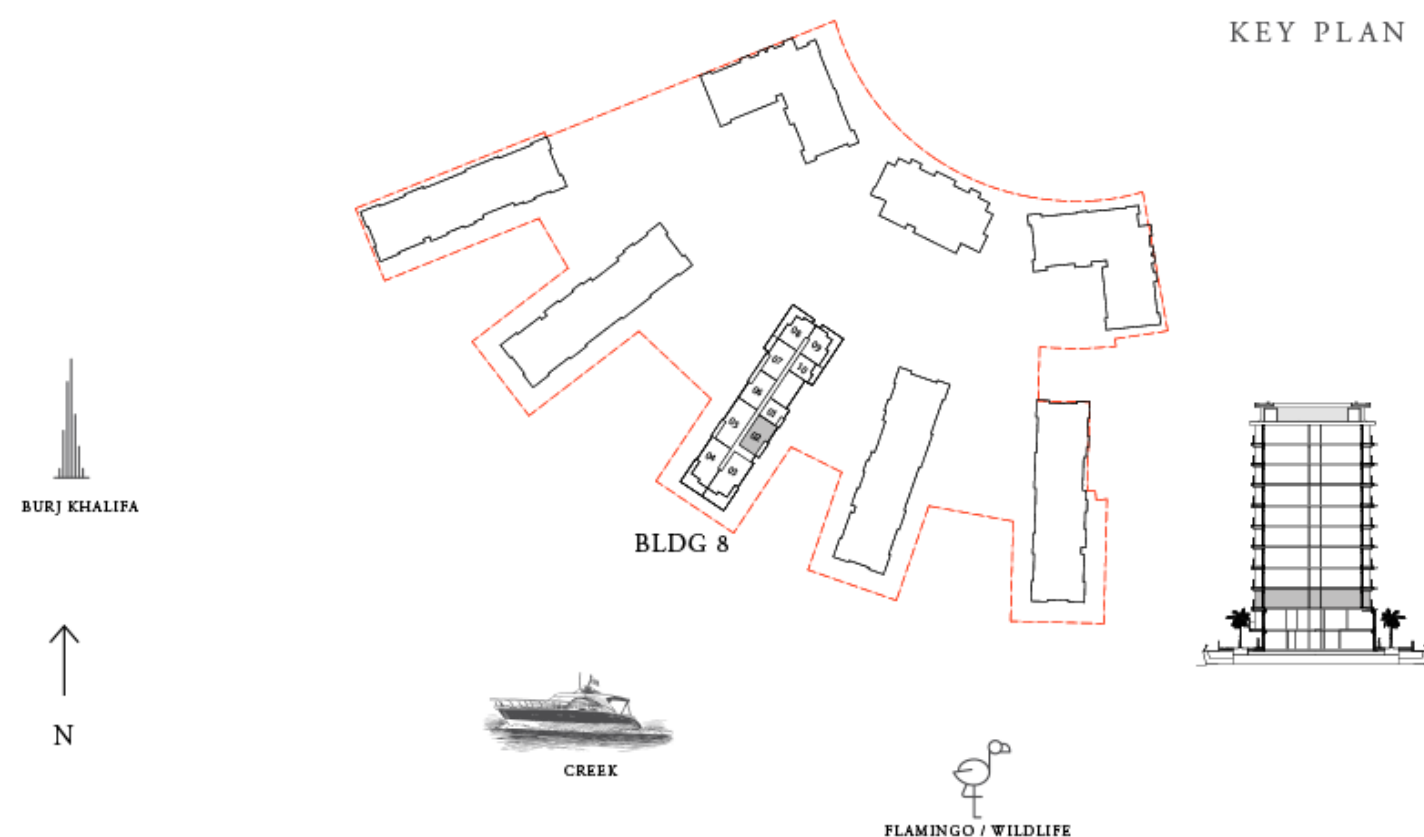
BUILDING 8 2 BEDROOM

LEVEL G

UNIT 02

SUITE AREA	1247.86 SQ.FT.	115.93 SQ.M.
BALCONY AREA	143.05 SQ.FT.	13.29 SQ.M.
TOTAL AREA	1390.91 SQ.FT.	129.22 SQ.M.

KEY PLAN



FLOOR PLAN 1. All dimensions are in imperial and metric, and measured from finish to finish excluding construction tolerances. 2. All materials, dimensions, and drawings are approximate only. 3. Information is subject to change without notice, at developer's absolute discretion. 4. Actual area may vary from the stated area. 5. Drawings not to scale. 6. All images used are for illustrative purposes only and do not represent the actual size, features, specifications, fittings, and furnishings. 7. The developer reserves the right to make revisions / alterations, at it's absolute discretion, without any liability whatsoever.

EMAAR

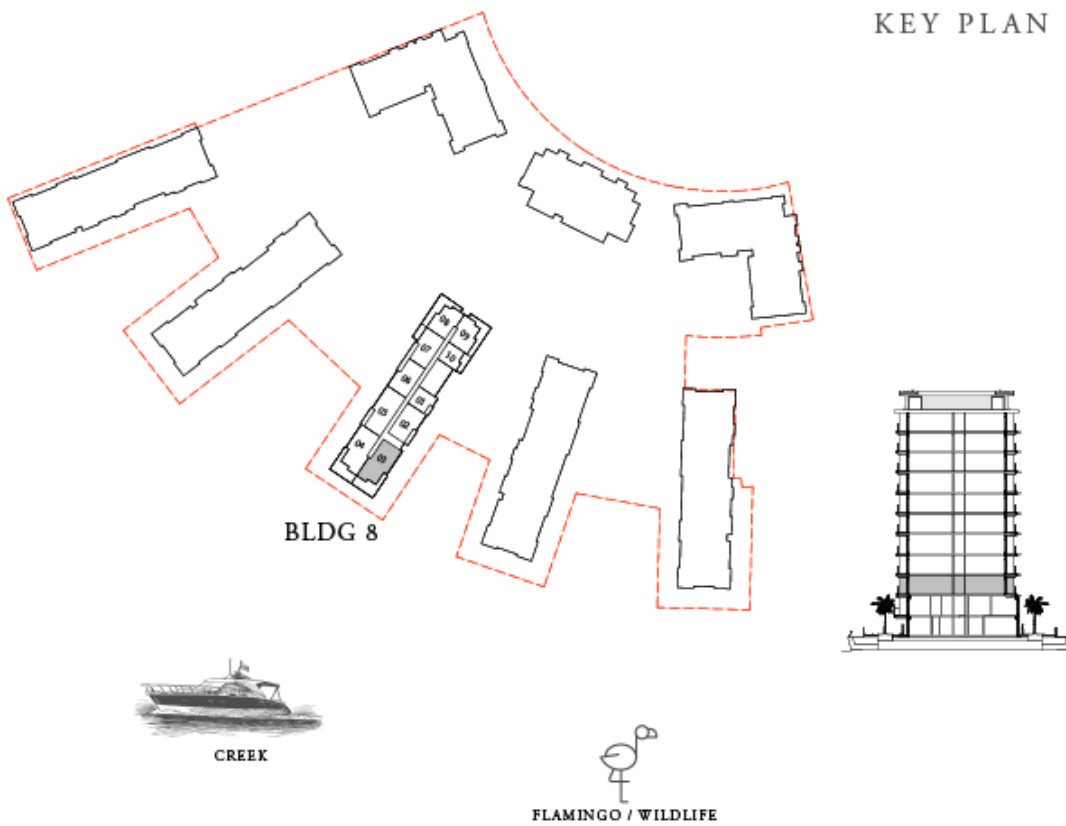
THE COVE

DUBAI CREEK HARBOUR

BUILDING 8 3 BEDROOM

LEVEL G UNIT 03

SUITE AREA	1621.26 SQ.FT.	150.62 SQ.M.
BALCONY AREA	249.40 SQ.FT.	23.17 SQ.M.
TOTAL AREA	1870.66 SQ.FT.	173.79 SQ.M.



FLOOR PLAN 1. All dimensions are in imperial and metric, and measured from finish to finish excluding construction tolerances. 2. All materials, dimensions, and drawings are approximate only. 3. Information is subject to change without notice, at developer's absolute discretion. 4. Actual area may vary from the stated area. 5. Drawings not to scale. 6. All images used are for illustrative purposes only and do not represent the actual size, features, specifications, fittings, and furnishings. 7. The developer reserves the right to make revisions / alterations, at it's absolute discretion, without any liability whatsoever.

EMAAR

THE COVE

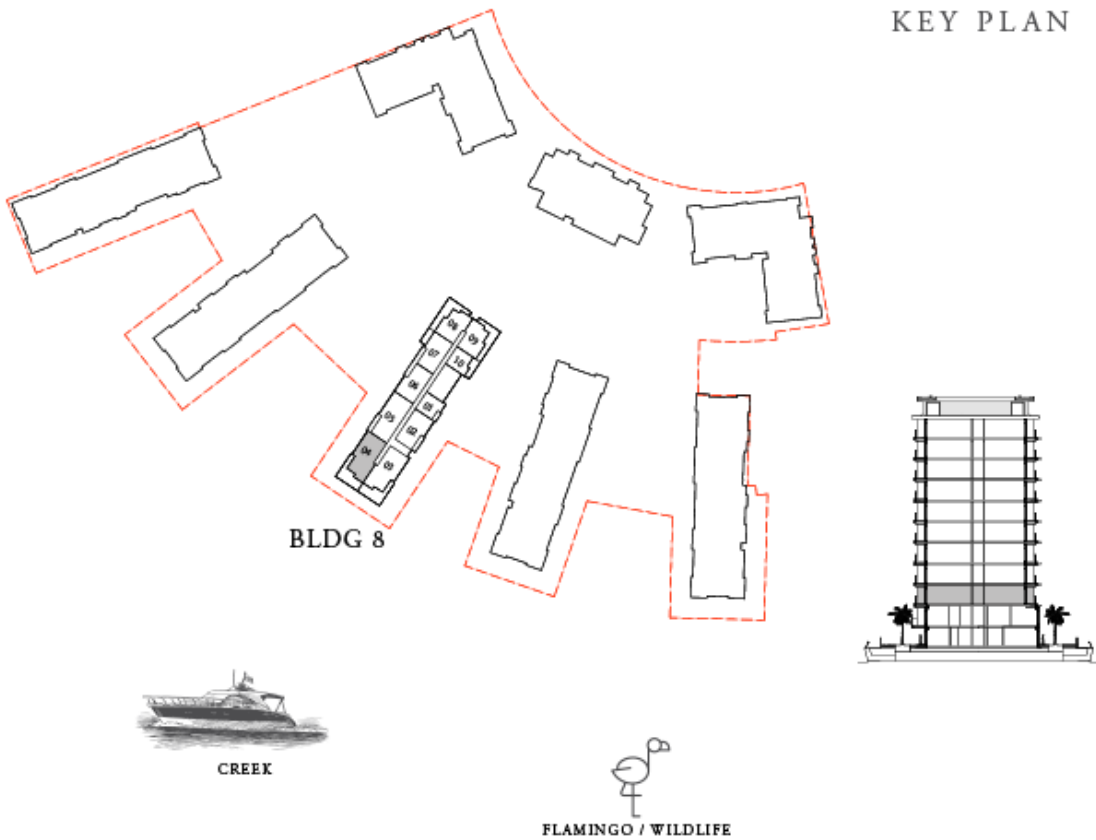
DUBAI CREEK HARBOUR

BUILDING 8 3 BEDROOM

LEVEL G UNIT 04

SUITE AREA	1618.35 SQ.FT.	150.35 SQ.M.
BALCONY AREA	249.29 SQ.FT.	23.16 SQ.M.
TOTAL AREA	1867.64 SQ.FT.	173.51 SQ.M.

KEY PLAN



FLOOR PLAN 1. All dimensions are in imperial and metric, and measured from finish to finish excluding construction tolerances. 2. All materials, dimensions, and drawings are approximate only. 3. Information is subject to change without notice, at developer's absolute discretion. 4. Actual area may vary from the stated area. 5. Drawings not to scale. 6. All images used are for illustrative purposes only and do not represent the actual size, features, specifications, fittings, and furnishings. 7. The developer reserves the right to make revisions / alterations, at it's absolute discretion, without any liability whatsoever.

THE COVE

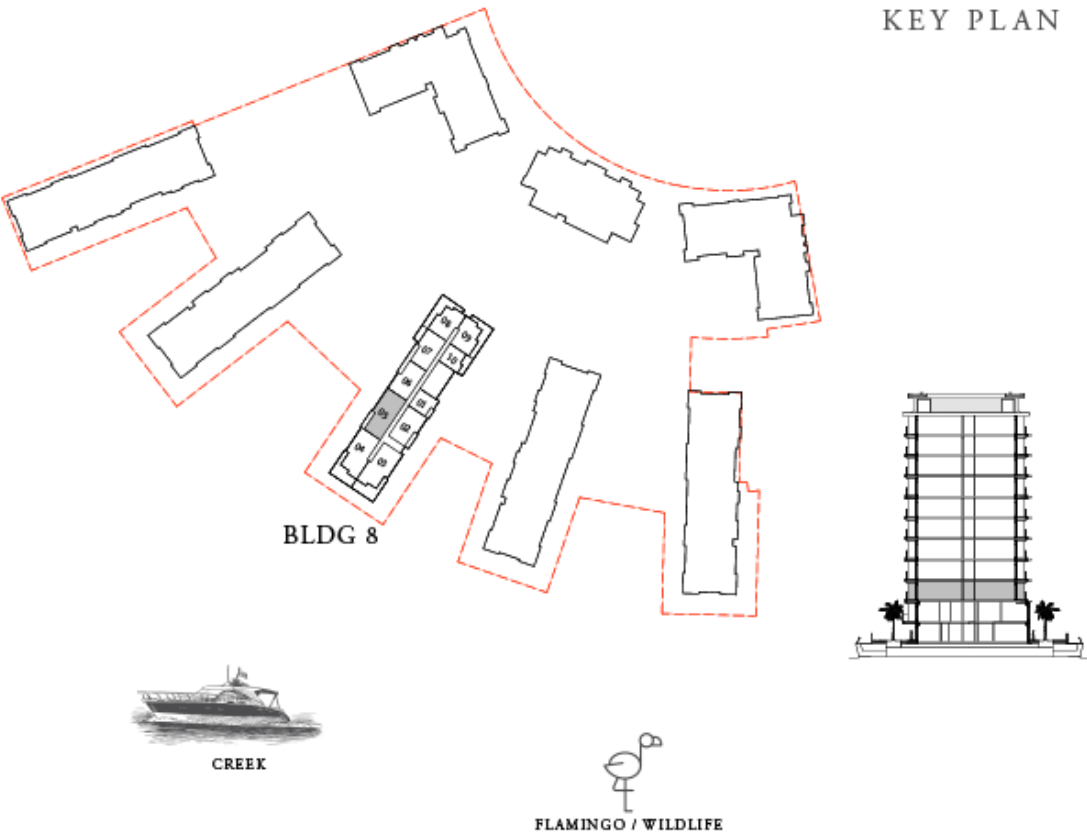
DUBAI CREEK HARBOUR

BUILDING 8 3 BEDROOM

LEVEL G UNIT 05

SUITE AREA	1666.36 SQ.FT.	154.81 SQ.M.
BALCONY AREA	161.35 SQ.FT.	14.99 SQ.M.
TOTAL AREA	1827.71 SQ.FT.	169.80 SQ.M.

KEY PLAN



FLOOR PLAN 1. All dimensions are in imperial and metric, and measured from finish to finish excluding construction tolerances. 2. All materials, dimensions, and drawings are approximate only. 3. Information is subject to change without notice, at developer's absolute discretion. 4. Actual area may vary from the stated area. 5. Drawings not to scale. 6. All images used are for illustrative purposes only and do not represent the actual size, features, specifications, fittings, and furnishings. 7. The developer reserves the right to make revisions / alterations, at it's absolute discretion, without any liability whatsoever.

EMAAR

THE COVE

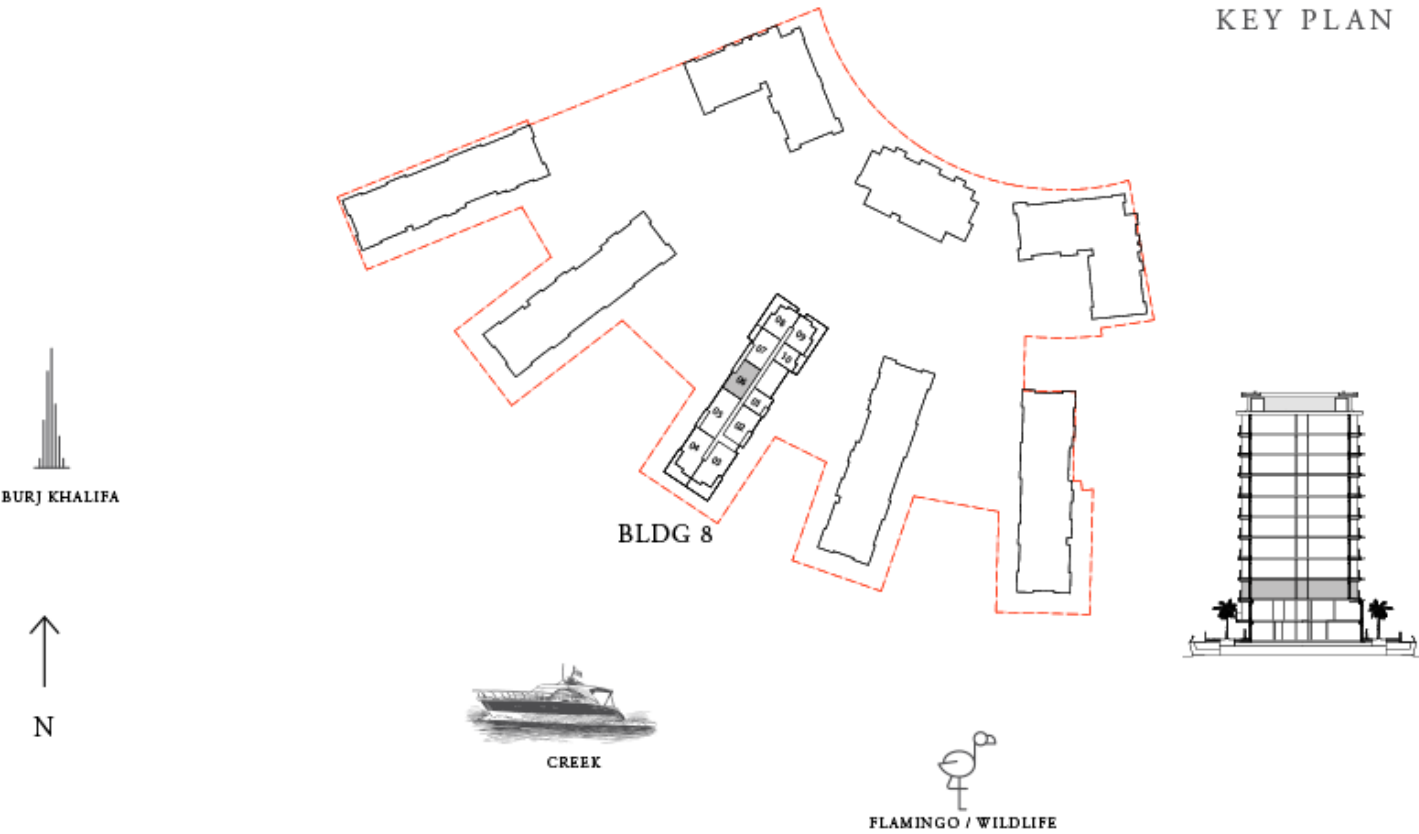
DUBAI CREEK HARBOUR

BUILDING 8 2 BEDROOM

LEVEL G UNIT 06

SUITE AREA	1240.86 SQ.FT.	115.28 SQ.M.
BALCONY AREA	142.30 SQ.FT.	13.22 SQ.M.
TOTAL AREA	1383.16 SQ.FT.	128.50 SQ.M.

KEY PLAN



FLOOR PLAN 1. All dimensions are in imperial and metric, and measured from finish to finish excluding construction tolerances. 2. All materials, dimensions, and drawings are approximate only. 3. Information is subject to change without notice, at developer's absolute discretion. 4. Actual area may vary from the stated area. 5. Drawings not to scale. 6. All images used are for illustrative purposes only and do not represent the actual size, features, specifications, fittings, and furnishings. 7. The developer reserves the right to make revisions / alterations, at it's absolute discretion, without any liability whatsoever.

THE COVE

DUBAI CREEK HARBOUR

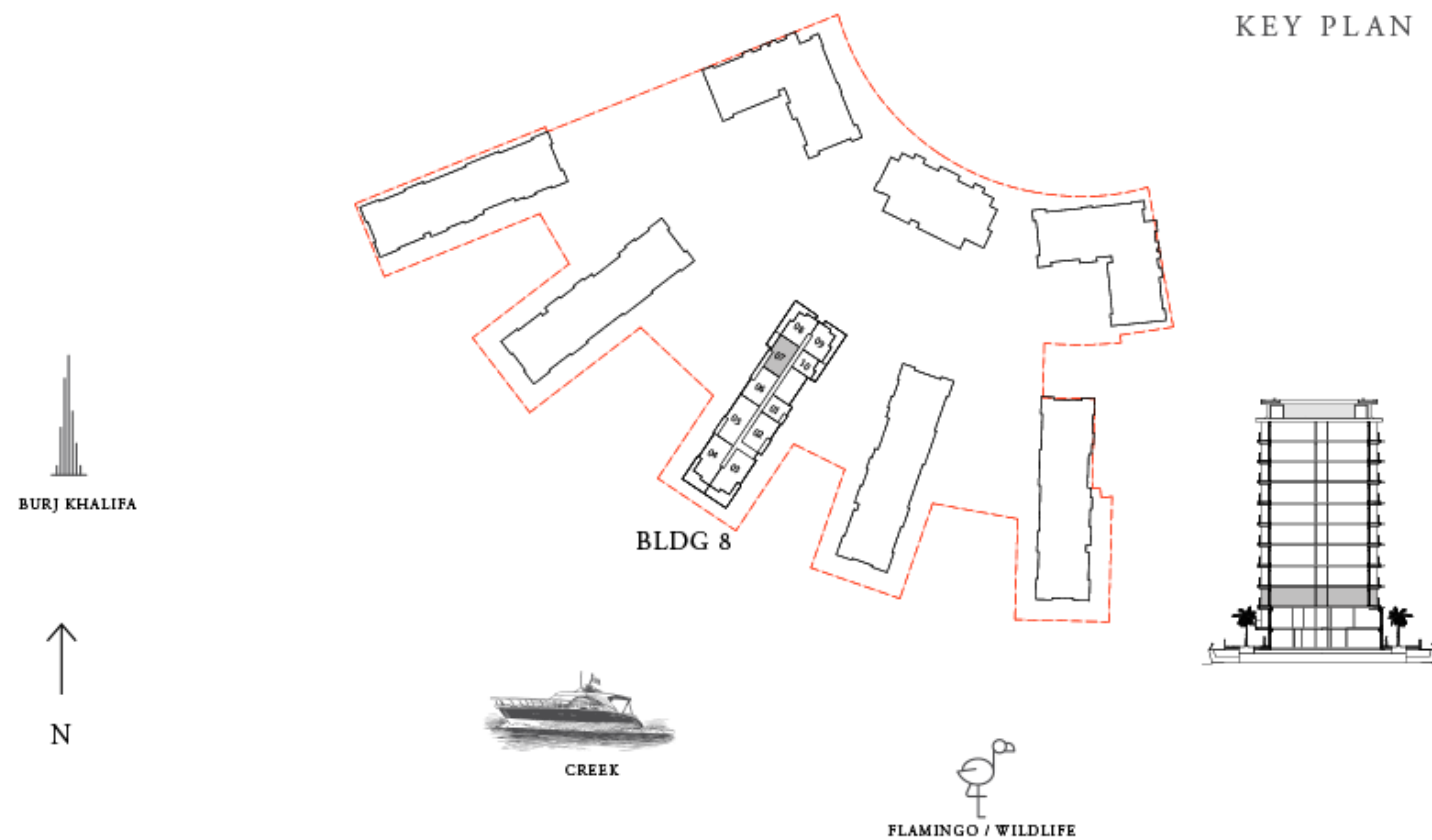
BUILDING 8 2 BEDROOM

LEVEL G

UNIT 07

SUITE AREA	1238.28 SQ.FT.	115.04 SQ.M.
BALCONY AREA	334.22 SQ.FT.	31.05 SQ.M.
TOTAL AREA	1572.50 SQ.FT.	146.09 SQ.M.

KEY PLAN



FLOOR PLAN 1. All dimensions are in imperial and metric, and measured from finish to finish excluding construction tolerances. 2. All materials, dimensions, and drawings are approximate only. 3. Information is subject to change without notice, at developer's absolute discretion. 4. Actual area may vary from the stated area. 5. Drawings not to scale. 6. All images used are for illustrative purposes only and do not represent the actual size, features, specifications, fittings, and furnishings. 7. The developer reserves the right to make revisions / alterations, at it's absolute discretion, without any liability whatsoever.

EMAAR

THE COVE

DUBAI CREEK HARBOUR

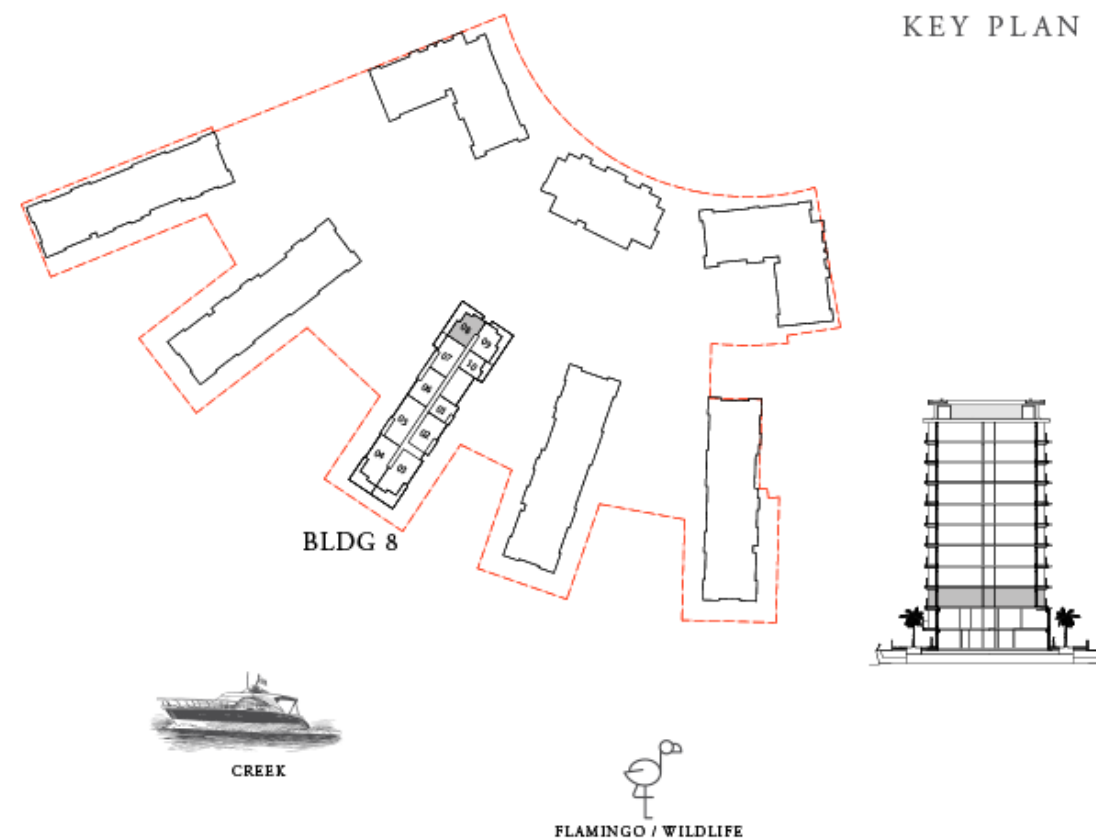
BUILDING 8 2 BEDROOM

LEVEL G

UNIT 08

SUITE AREA	1119.88 SQ.FT.	104.04 SQ.M.
BALCONY AREA	664.67 SQ.FT.	61.75 SQ.M.
TOTAL AREA	1784.55 SQ.FT.	165.79 SQ.M.

KEY PLAN



FLOOR PLAN 1. All dimensions are in imperial and metric, and measured from finish to finish excluding construction tolerances. 2. All materials, dimensions, and drawings are approximate only. 3. Information is subject to change without notice, at developer's absolute discretion. 4. Actual area may vary from the stated area. 5. Drawings not to scale. 6. All images used are for illustrative purposes only and do not represent the actual size, features, specifications, fittings, and furnishings. 7. The developer reserves the right to make revisions / alterations, at it's absolute discretion, without any liability whatsoever.

EMAAR

THE COVE

DUBAI CREEK HARBOUR

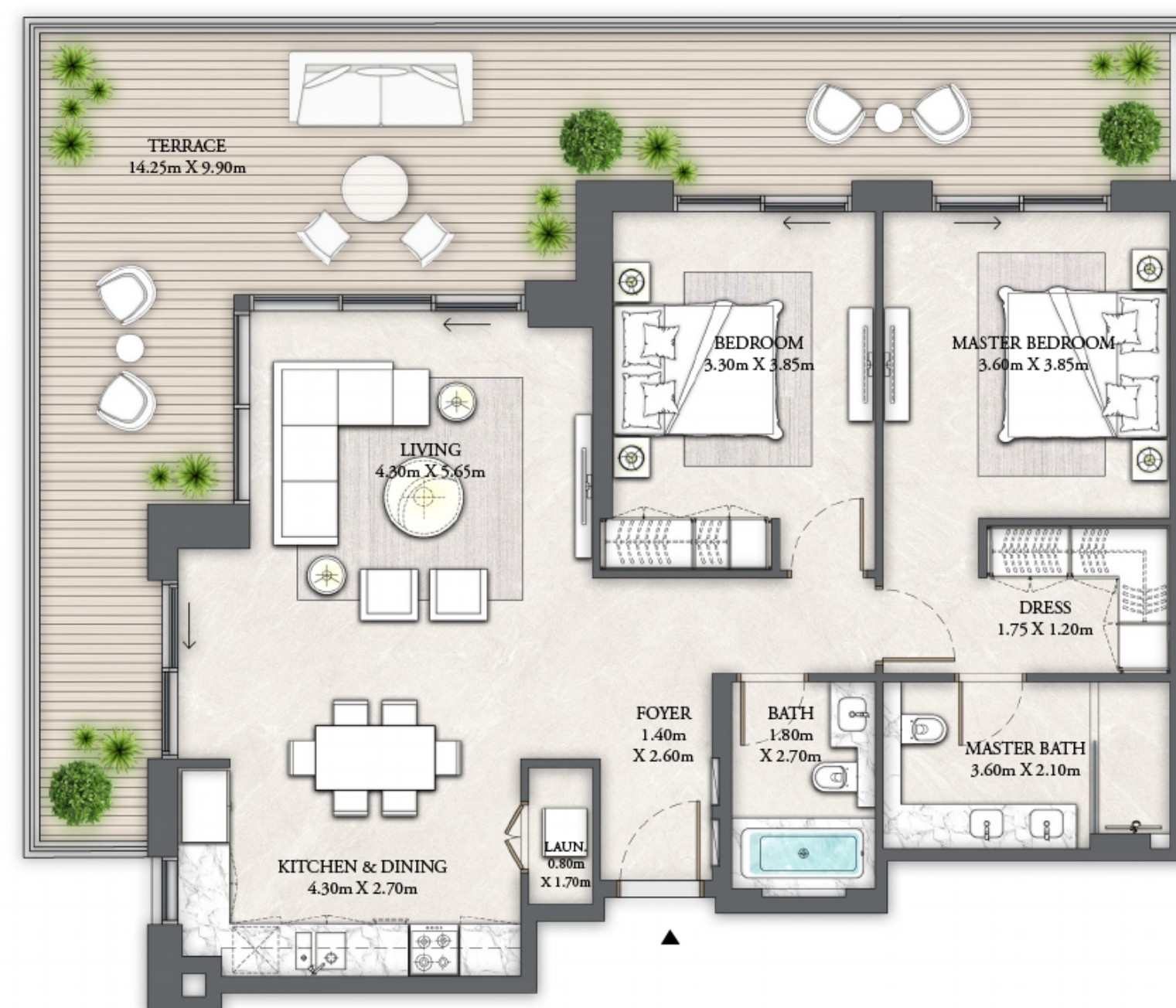
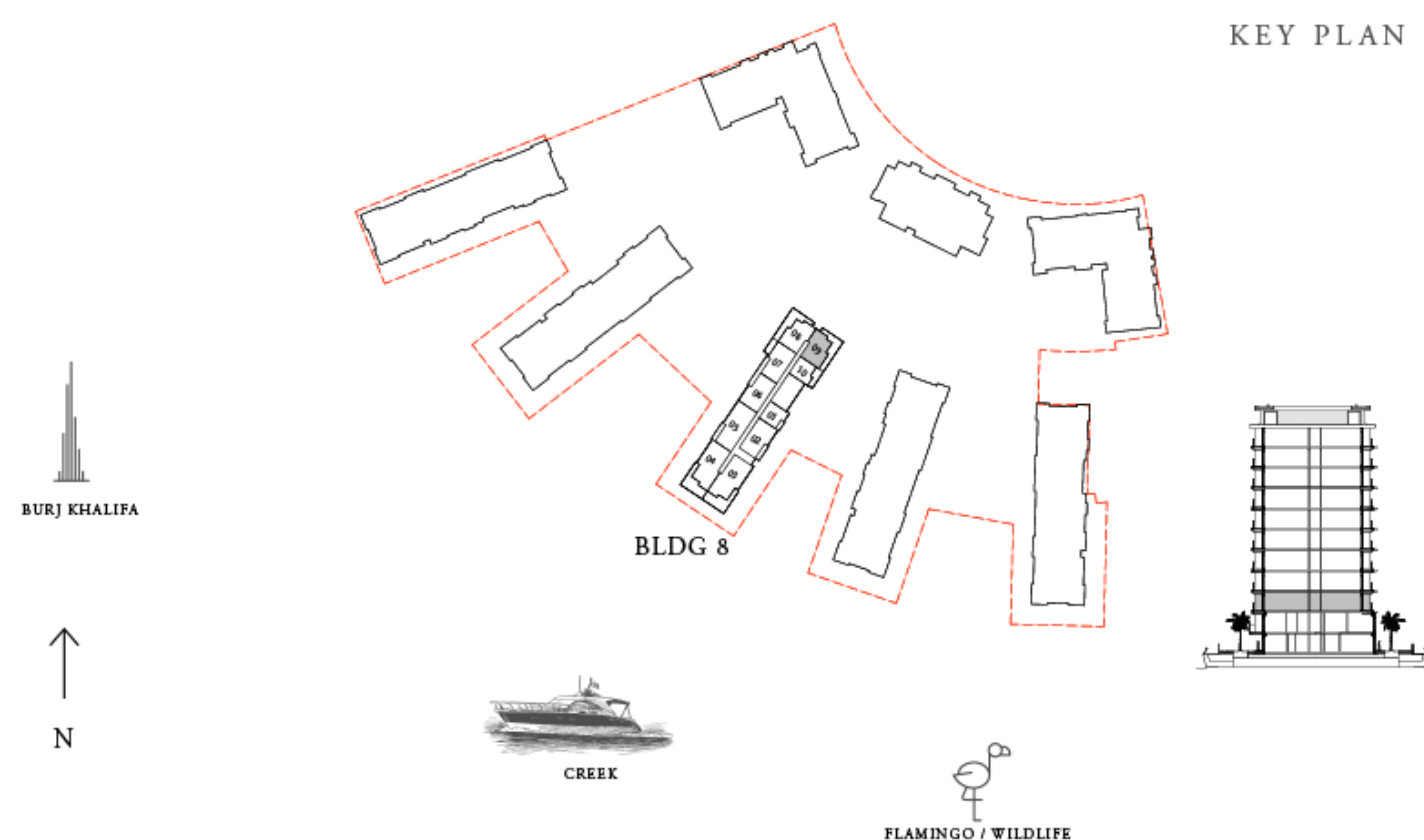
BUILDING 8 2 BEDROOM

LEVEL G

UNIT 09

SUITE AREA	1119.66 SQ.FT.	104.02 SQ.M.
BALCONY AREA	596.86 SQ.FT.	55.45 SQ.M.
TOTAL AREA	1716.52 SQ.FT.	159.47 SQ.M.

KEY PLAN



FLOOR PLAN 1. All dimensions are in imperial and metric, and measured from finish to finish excluding construction tolerances. 2. All materials, dimensions, and drawings are approximate only. 3. Information is subject to change without notice, at developer's absolute discretion. 4. Actual area may vary from the stated area. 5. Drawings not to scale. 6. All images used are for illustrative purposes only and do not represent the actual size, features, specifications, fittings, and furnishings. 7. The developer reserves the right to make revisions / alterations, at it's absolute discretion, without any liability whatsoever.

EMAAR

THE COVE

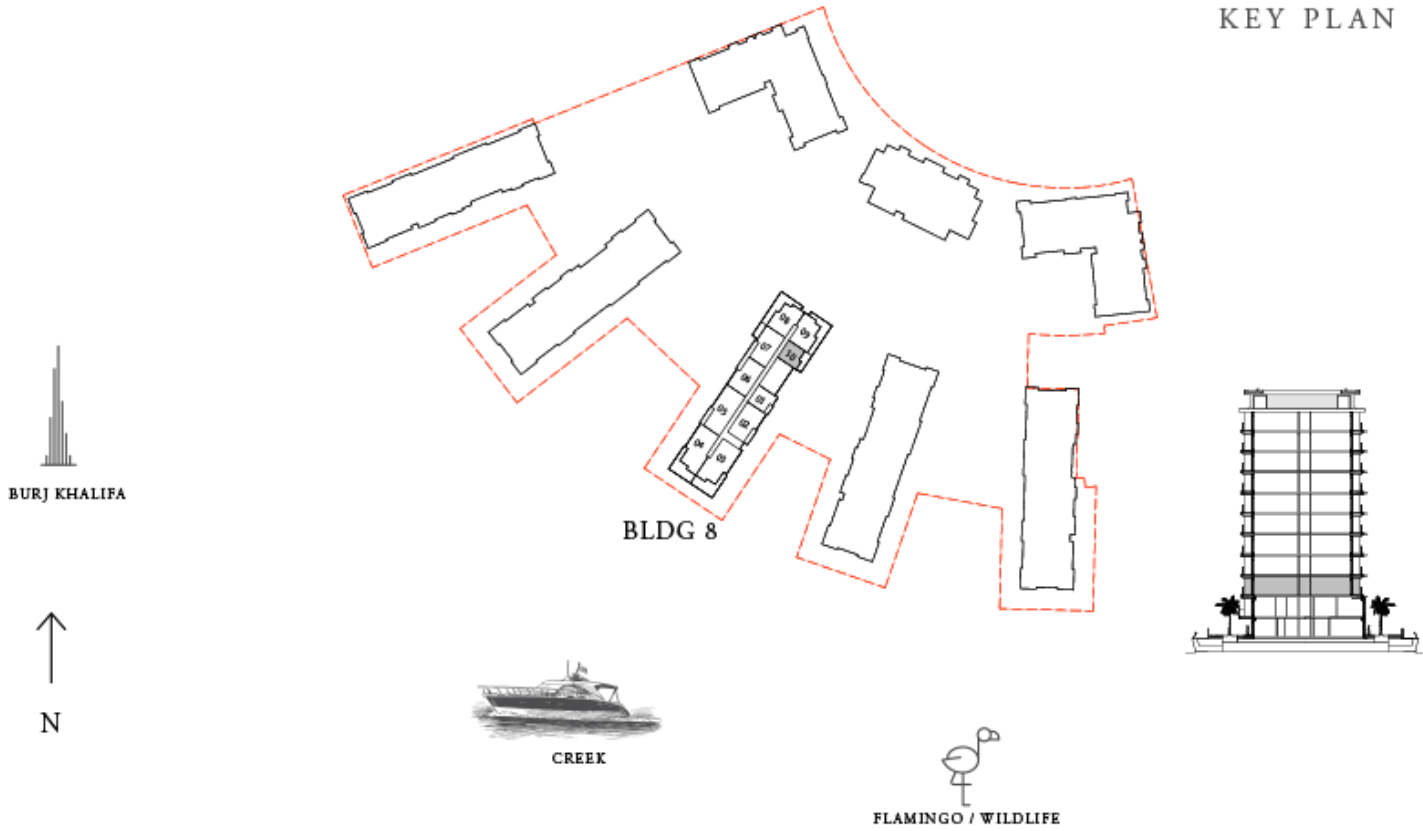
DUBAI CREEK HARBOUR

BUILDING 8 1 BEDROOM

LEVEL G UNIT 10

SUITE AREA	691.26 SQ.FT.	64.22 SQ.M.
BALCONY AREA	258.33 SQ.FT.	24.00 SQ.M.
TOTAL AREA	949.59 SQ.FT.	88.22 SQ.M.

KEY PLAN



FLOOR PLAN 1. All dimensions are in imperial and metric, and measured from finish to finish excluding construction tolerances. 2. All materials, dimensions, and drawings are approximate only. 3. Information is subject to change without notice, at developer's absolute discretion. 4. Actual area may vary from the stated area. 5. Drawings not to scale. 6. All images used are for illustrative purposes only and do not represent the actual size, features, specifications, fittings, and furnishings. 7. The developer reserves the right to make revisions / alterations, at it's absolute discretion, without any liability whatsoever.

EMAAR

THE COVE

DUBAI CREEK HARBOUR

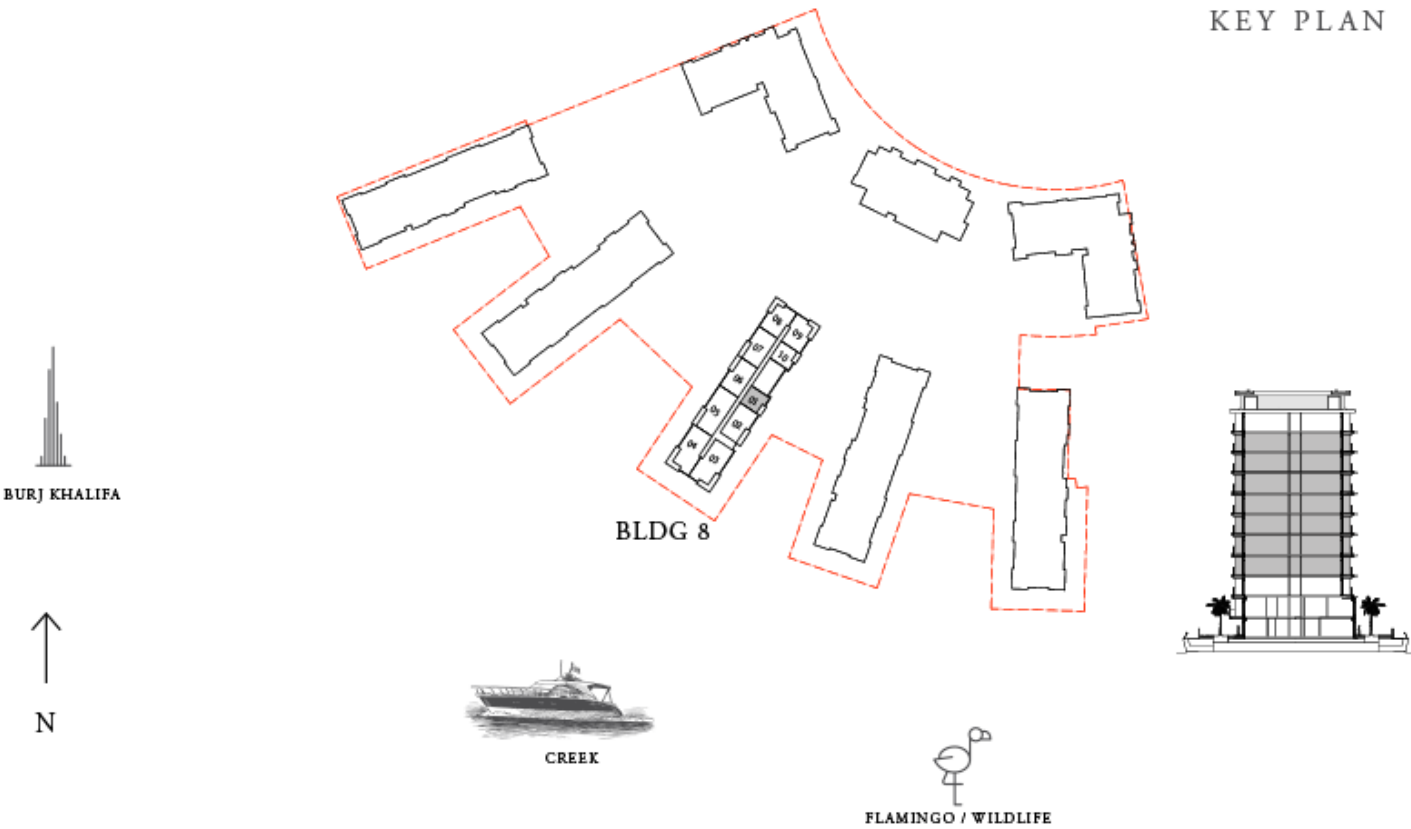
BUILDING 8 1 BEDROOM

LEVELS 01 - 07 UNIT 01

SUITE AREA	695.89 SQ.FT.	64.65 SQ.M.
BALCONY AREA	91.60 SQ.FT.	8.51 SQ.M.
TOTAL AREA	787.49 SQ.FT.	73.16 SQ.M.



KEY PLAN



FLOOR PLAN 1. All dimensions are in imperial and metric, and measured from finish to finish excluding construction tolerances. 2. All materials, dimensions, and drawings are approximate only. 3. Information is subject to change without notice, at developer's absolute discretion. 4. Actual area may vary from the stated area. 5. Drawings not to scale. 6. All images used are for illustrative purposes only and do not represent the actual size, features, specifications, fittings, and furnishings. 7. The developer reserves the right to make revisions / alterations, at it's absolute discretion, without any liability whatsoever.

EMAAR

THE COVE

DUBAI CREEK HARBOUR

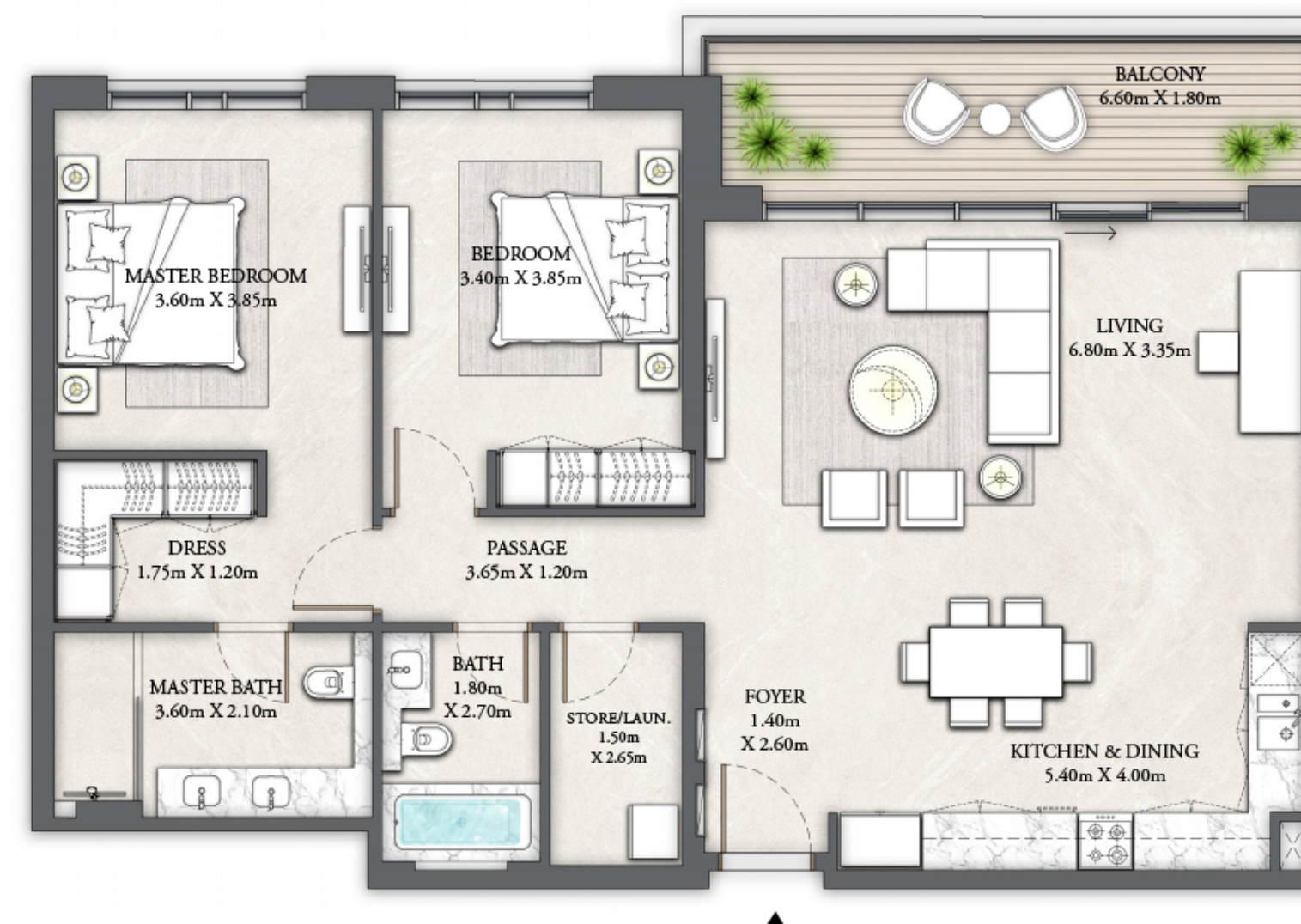
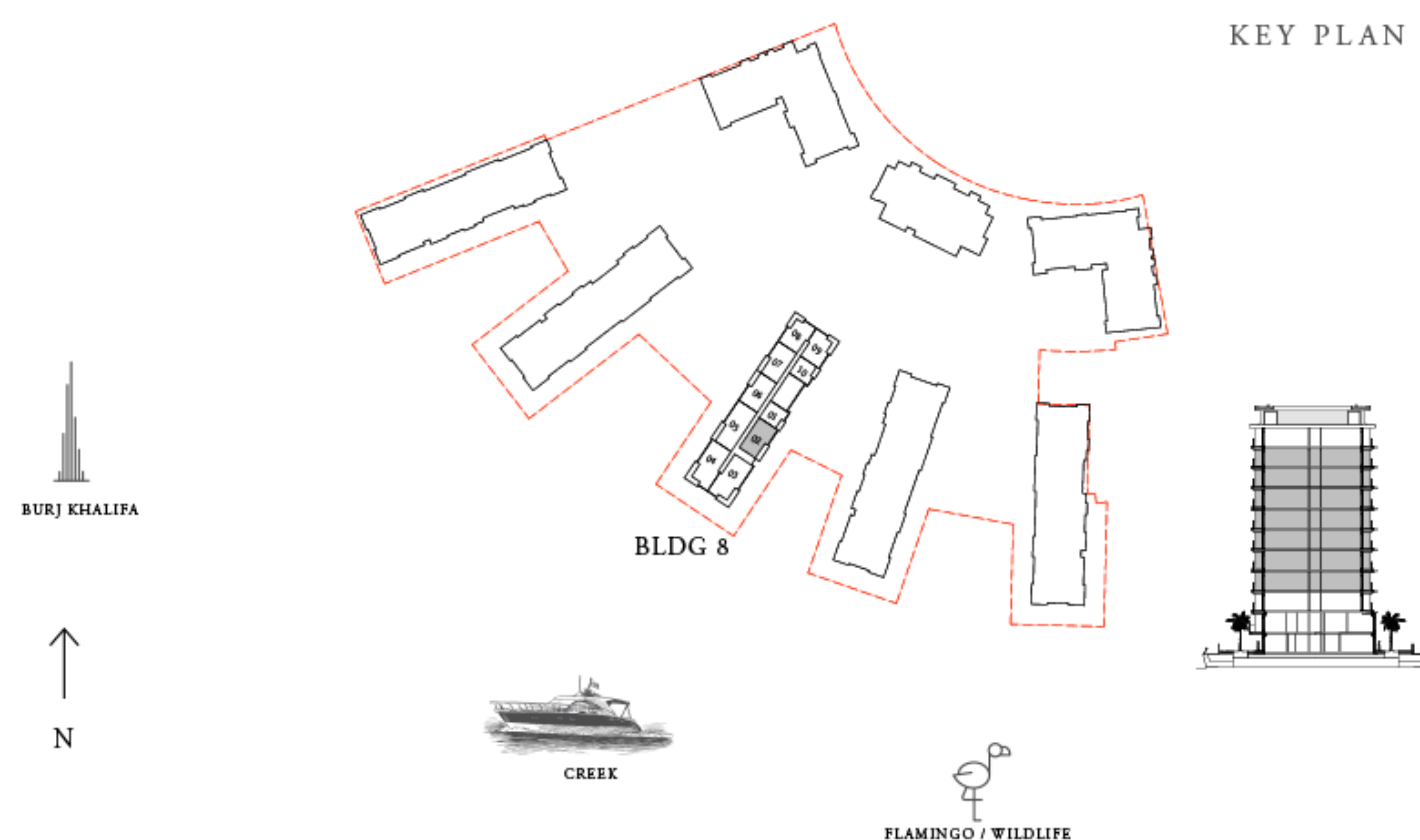
BUILDING 8 2 BEDROOM

LEVELS 01 - 07

UNIT 02

SUITE AREA	1247.86 SQ.FT.	115.93 SQ.M.
BALCONY AREA	141.44 SQ.FT.	13.14 SQ.M.
TOTAL AREA	1389.30 SQ.FT.	129.07 SQ.M.

KEY PLAN



FLOOR PLAN 1. All dimensions are in imperial and metric, and measured from finish to finish excluding construction tolerances. 2. All materials, dimensions, and drawings are approximate only. 3. Information is subject to change without notice, at developer's absolute discretion. 4. Actual area may vary from the stated area. 5. Drawings not to scale. 6. All images used are for illustrative purposes only and do not represent the actual size, features, specifications, fittings, and furnishings. 7. The developer reserves the right to make revisions / alterations, at it's absolute discretion, without any liability whatsoever.

EMAAR

THE COVE

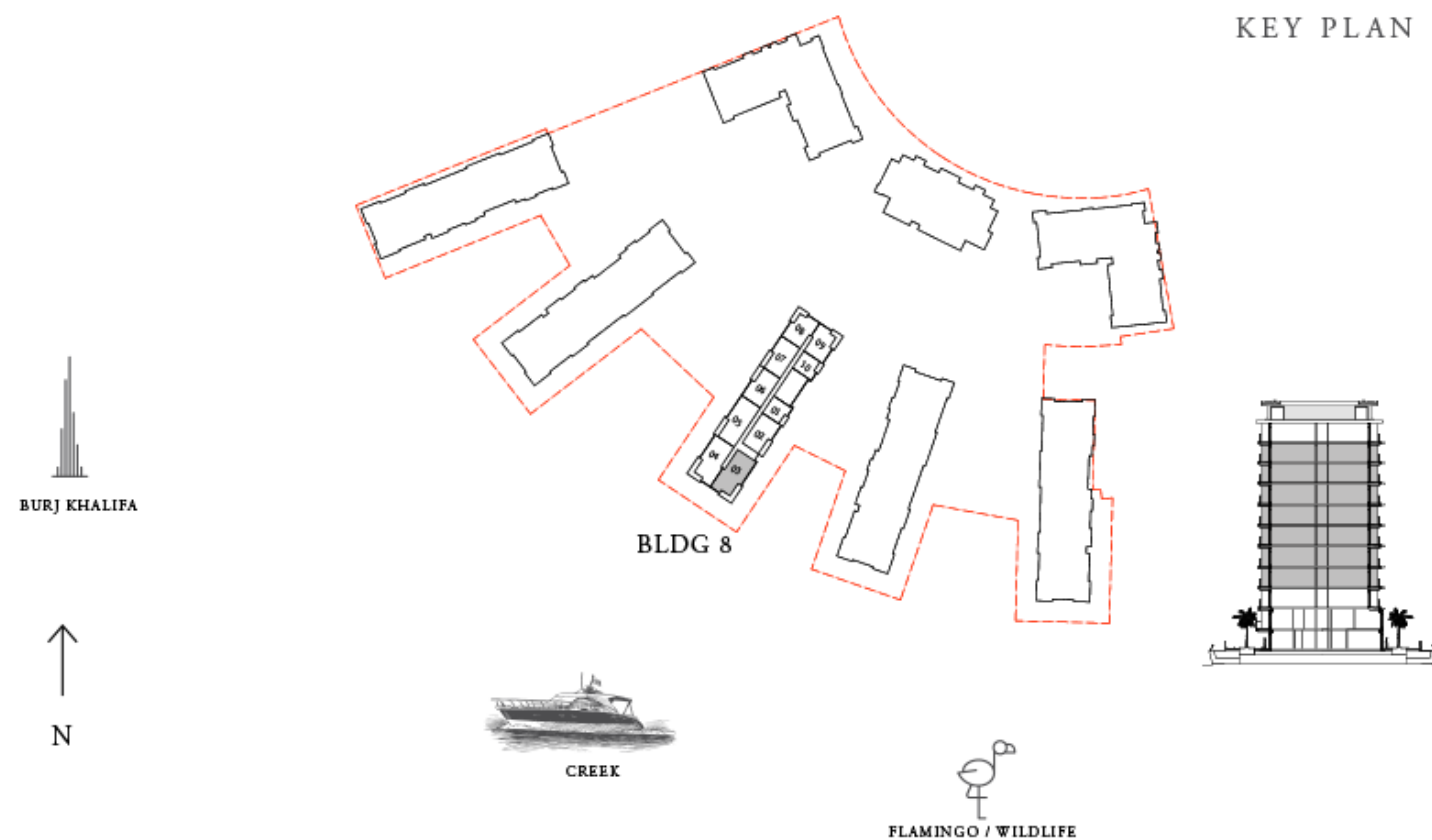
DUBAI CREEK HARBOUR

BUILDING 8 3 BEDROOM

LEVELS 01 - 07

UNIT 03

SUITE AREA	1621.26 SQ.FT.	150.62 SQ.M.
BALCONY AREA	249.40 SQ.FT.	23.17 SQ.M.
TOTAL AREA	1870.66 SQ.FT.	173.79 SQ.M.



FLOOR PLAN 1. All dimensions are in imperial and metric, and measured from finish to finish excluding construction tolerances. 2. All materials, dimensions, and drawings are approximate only. 3. Information is subject to change without notice, at developer's absolute discretion. 4. Actual area may vary from the stated area. 5. Drawings not to scale. 6. All images used are for illustrative purposes only and do not represent the actual size, features, specifications, fittings, and furnishings. 7. The developer reserves the right to make revisions / alterations, at it's absolute discretion, without any liability whatsoever.

EMAAR

THE COVE

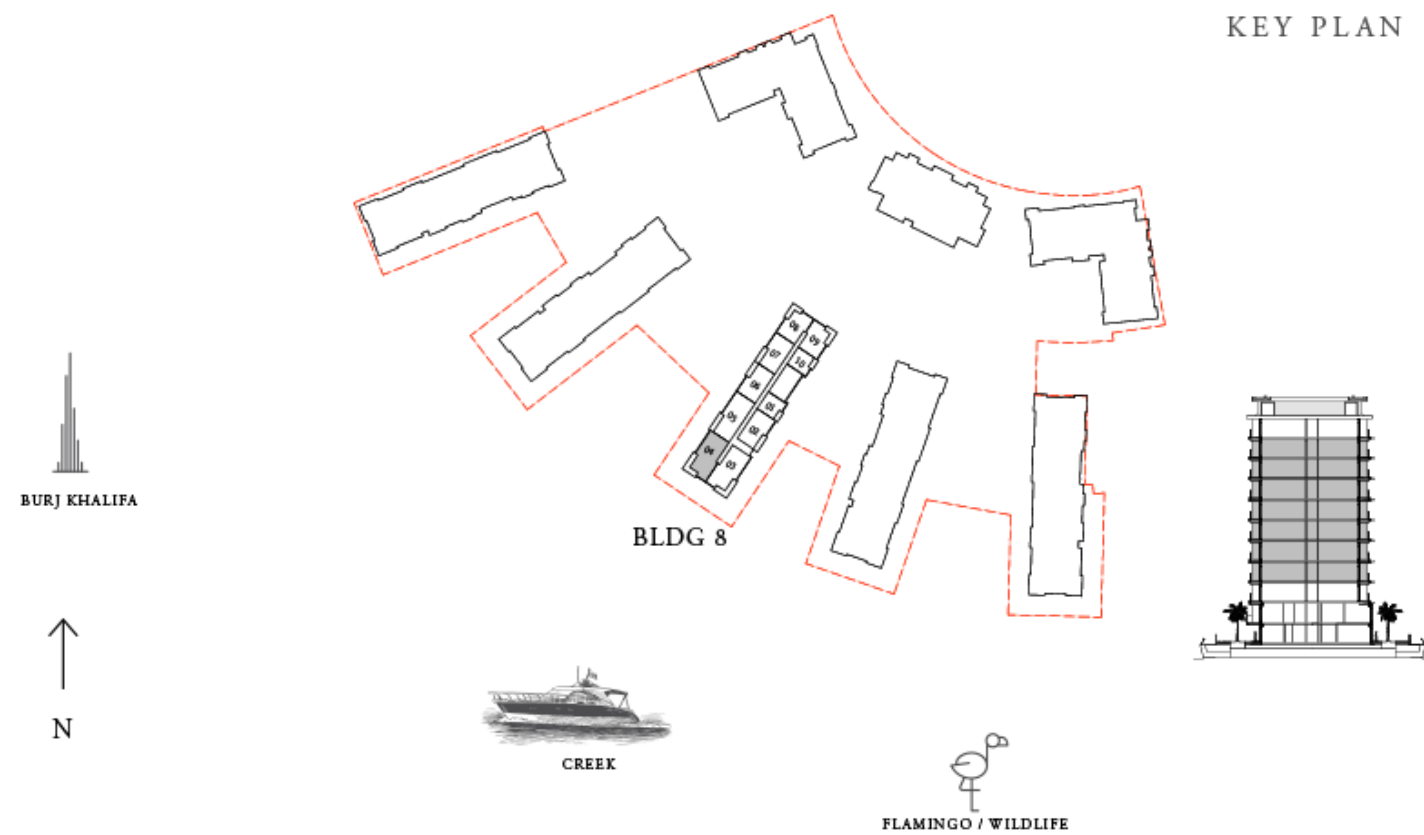
DUBAI CREEK HARBOUR

BUILDING 8 3 BEDROOM

LEVELS 01 - 07

UNIT 04

SUITE AREA	1618.35 SQ.FT.	150.35 SQ.M.
BALCONY AREA	249.40 SQ.FT.	23.17 SQ.M.
TOTAL AREA	1867.75 SQ.FT.	173.52 SQ.M.



FLOOR PLAN 1. All dimensions are in imperial and metric, and measured from finish to finish excluding construction tolerances. 2. All materials, dimensions, and drawings are approximate only. 3. Information is subject to change without notice, at developer's absolute discretion. 4. Actual area may vary from the stated area. 5. Drawings not to scale. 6. All images used are for illustrative purposes only and do not represent the actual size, features, specifications, fittings, and furnishings. 7. The developer reserves the right to make revisions / alterations, at it's absolute discretion, without any liability whatsoever.

EMAAR

THE COVE

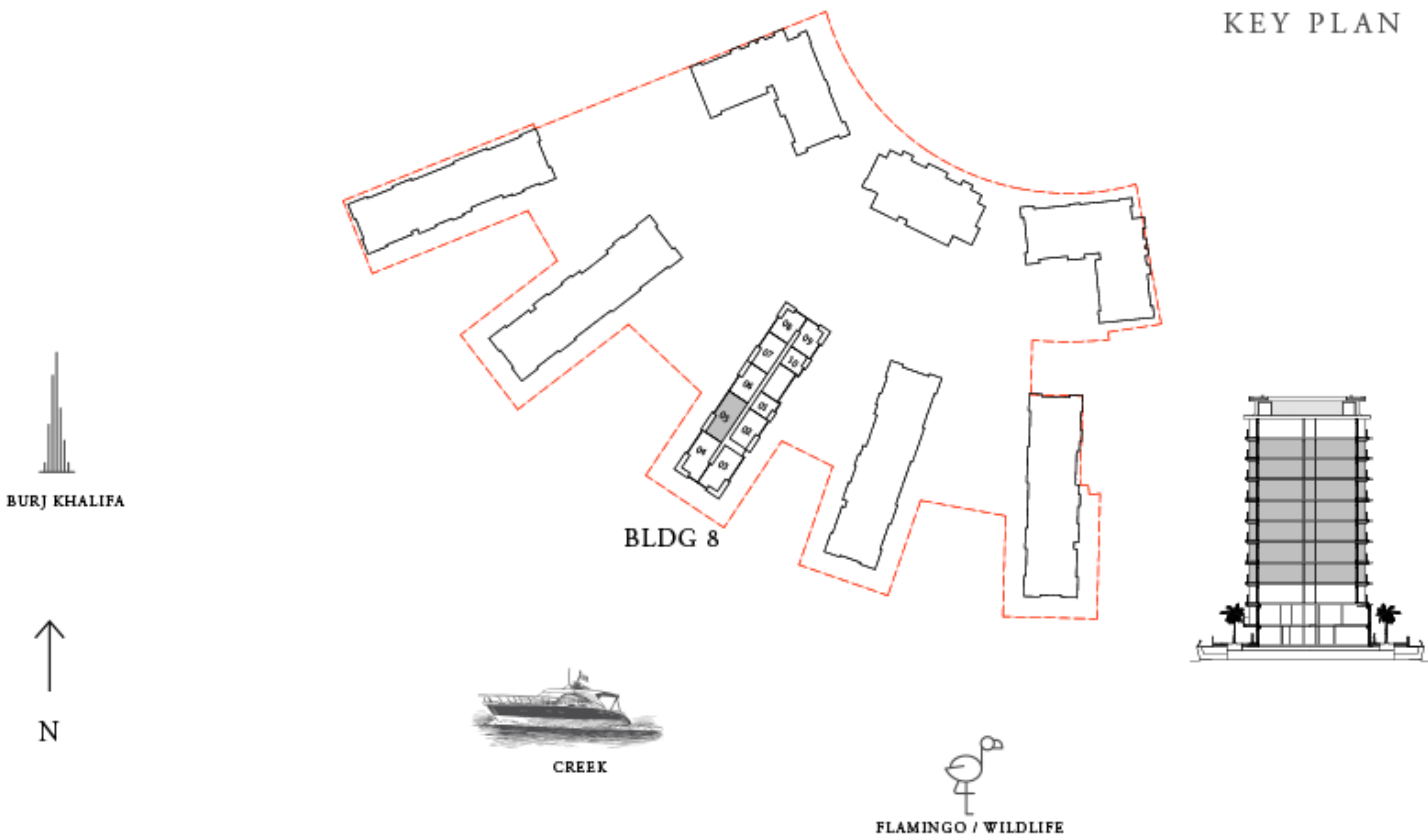
DUBAI CREEK HARBOUR

BUILDING 8 3 BEDROOM

LEVELS 01 - 07 UNIT 05

SUITE AREA	1666.36 SQ.FT.	154.81 SQ.M.
BALCONY AREA	161.35 SQ.FT.	14.99 SQ.M.
TOTAL AREA	1827.71 SQ.FT.	169.80 SQ.M.

KEY PLAN



FLOOR PLAN 1. All dimensions are in imperial and metric, and measured from finish to finish excluding construction tolerances. 2. All materials, dimensions, and drawings are approximate only. 3. Information is subject to change without notice, at developer's absolute discretion. 4. Actual area may vary from the stated area. 5. Drawings not to scale. 6. All images used are for illustrative purposes only and do not represent the actual size, features, specifications, fittings, and furnishings. 7. The developer reserves the right to make revisions / alterations, at it's absolute discretion, without any liability whatsoever.

EMAAR

THE COVE

DUBAI CREEK HARBOUR

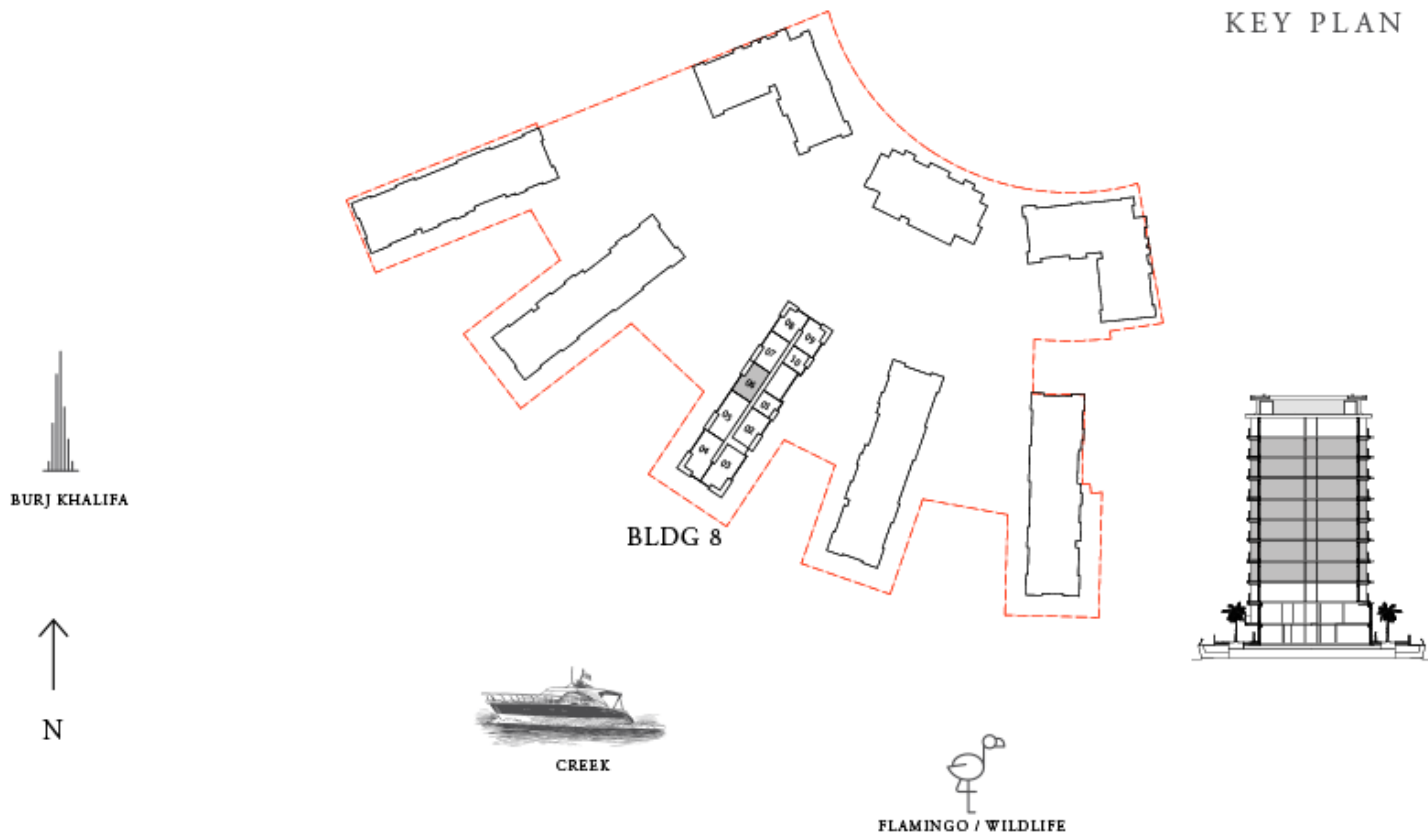
BUILDING 8 2 BEDROOM

LEVELS 01 - 07 UNIT 06

SUITE AREA	1240.86 SQ.FT.	115.28 SQ.M.
BALCONY AREA	144.88 SQ.FT.	13.46 SQ.M.
TOTAL AREA	1385.74 SQ.FT.	128.74 SQ.M.



KEY PLAN



FLOOR PLAN 1. All dimensions are in imperial and metric, and measured from finish to finish excluding construction tolerances. 2. All materials, dimensions, and drawings are approximate only. 3. Information is subject to change without notice, at developer's absolute discretion. 4. Actual area may vary from the stated area. 5. Drawings not to scale. 6. All images used are for illustrative purposes only and do not represent the actual size, features, specifications, fittings, and furnishings. 7. The developer reserves the right to make revisions / alterations, at it's absolute discretion, without any liability whatsoever.

EMAAR

THE COVE

DUBAI CREEK HARBOUR

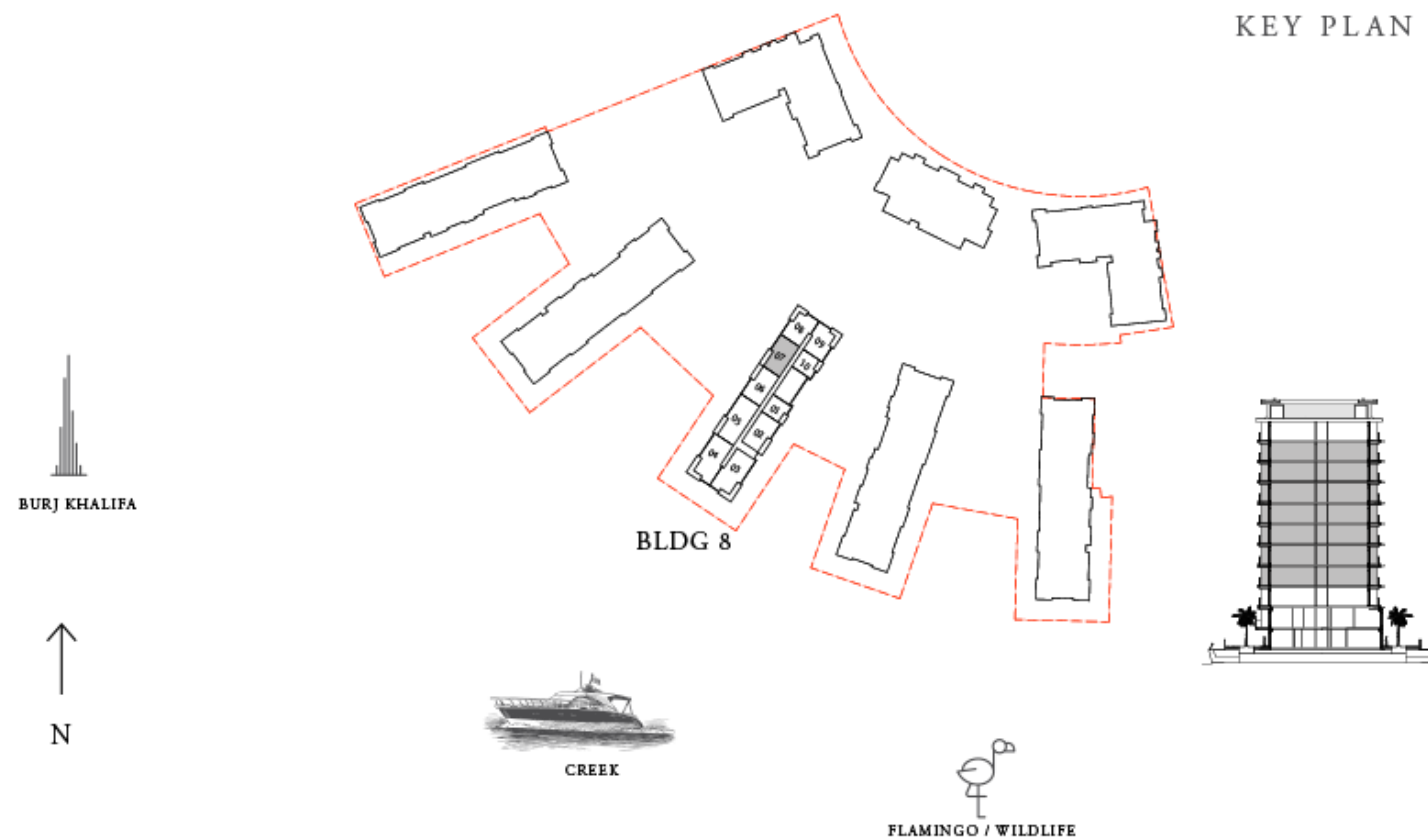
BUILDING 8 2 BEDROOM

LEVELS 01 - 07

UNIT 07

SUITE AREA	1240.97 SQ.FT.	115.29 SQ.M.
BALCONY AREA	144.88 SQ.FT.	13.46 SQ.M.
TOTAL AREA	1385.85 SQ.FT.	128.75 SQ.M.

KEY PLAN



FLOOR PLAN 1. All dimensions are in imperial and metric, and measured from finish to finish excluding construction tolerances. 2. All materials, dimensions, and drawings are approximate only. 3. Information is subject to change without notice, at developer's absolute discretion. 4. Actual area may vary from the stated area. 5. Drawings not to scale. 6. All images used are for illustrative purposes only and do not represent the actual size, features, specifications, fittings, and furnishings. 7. The developer reserves the right to make revisions / alterations, at it's absolute discretion, without any liability whatsoever.

EMAAR

THE COVE

DUBAI CREEK HARBOUR

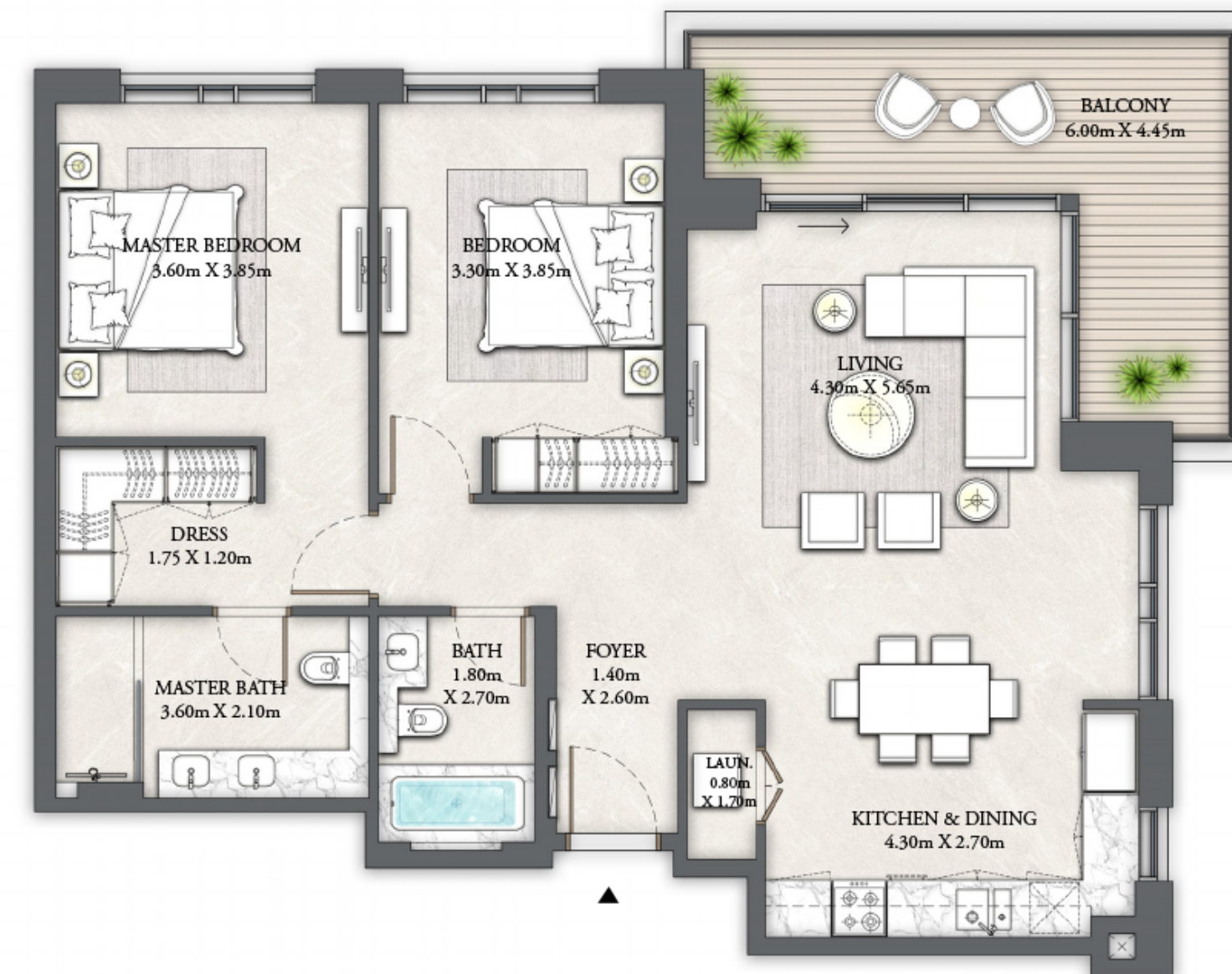
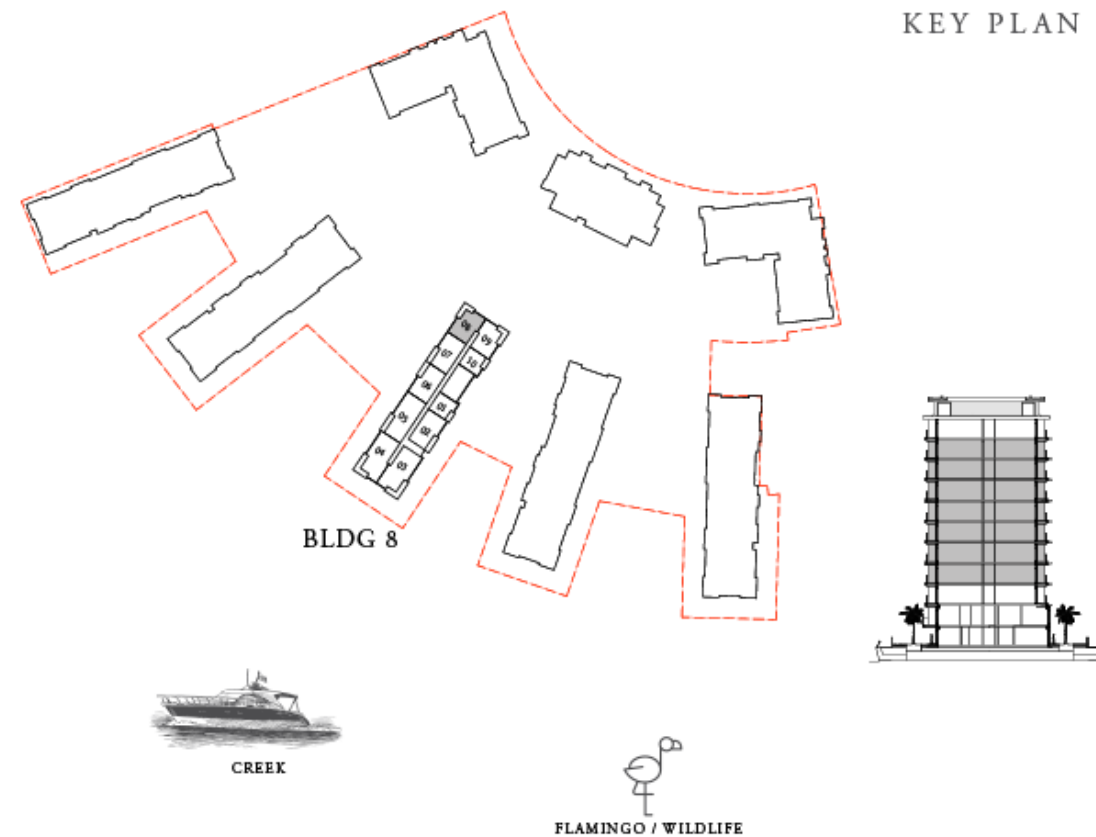
BUILDING 8 2 BEDROOM

LEVELS 01 - 07

UNIT 08

SUITE AREA	1123.86 SQ.FT.	104.41 SQ.M.
BALCONY AREA	188.48 SQ.FT.	17.51 SQ.M.
TOTAL AREA	1312.34 SQ.FT.	121.92 SQ.M.

KEY PLAN



FLOOR PLAN 1. All dimensions are in imperial and metric, and measured from finish to finish excluding construction tolerances. 2. All materials, dimensions, and drawings are approximate only. 3. Information is subject to change without notice, at developer's absolute discretion. 4. Actual area may vary from the stated area. 5. Drawings not to scale. 6. All images used are for illustrative purposes only and do not represent the actual size, features, specifications, fittings, and furnishings. 7. The developer reserves the right to make revisions / alterations, at it's absolute discretion, without any liability whatsoever.

EMAAR

THE COVE

DUBAI CREEK HARBOUR

BUILDING 8 2 BEDROOM

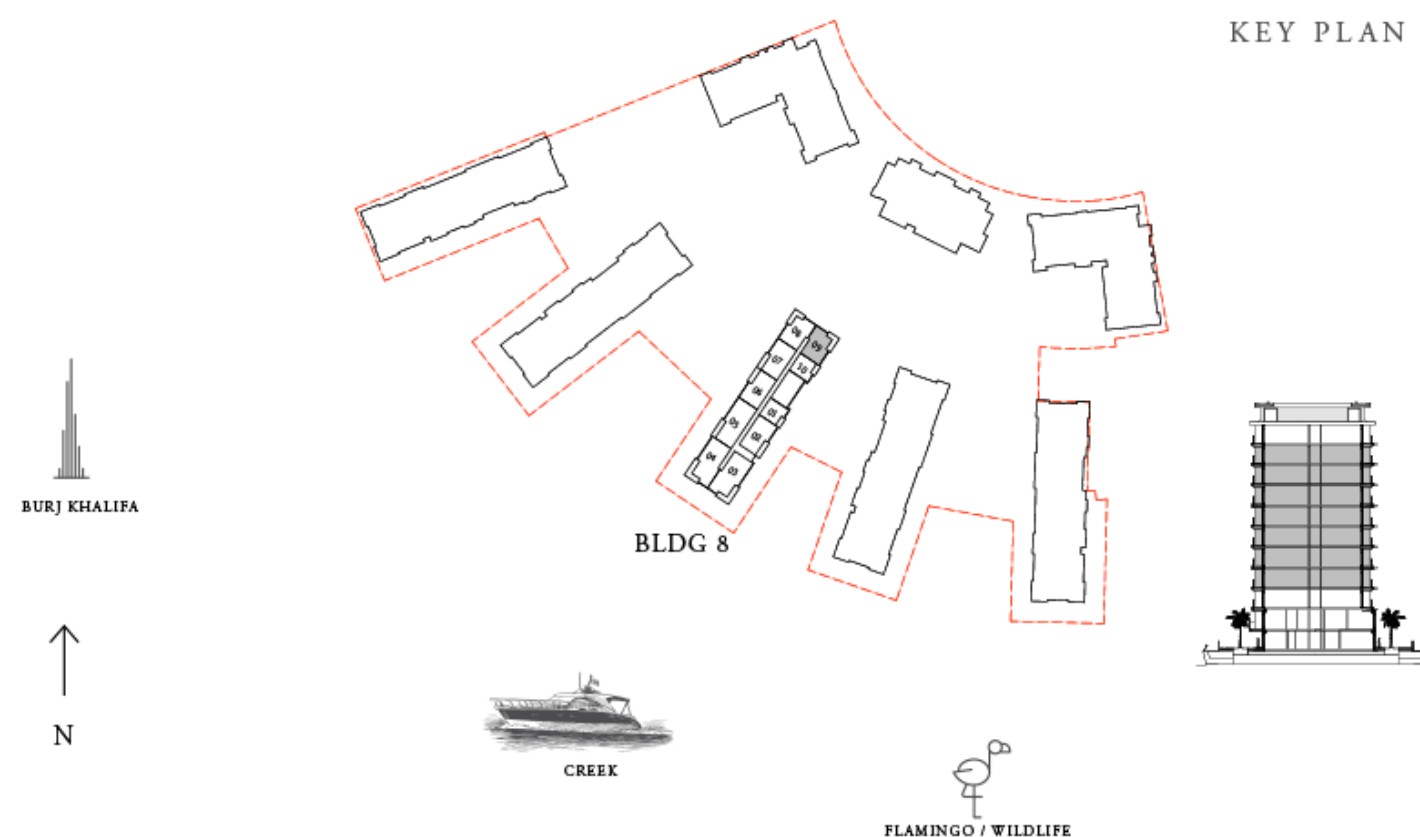
LEVELS 01 - 07

UNIT 09

SUITE AREA	1123.64 SQ.FT.	104.39 SQ.M.
BALCONY AREA	188.37 SQ.FT.	17.50 SQ.M.
TOTAL AREA	1312.01 SQ.FT.	121.89 SQ.M.



KEY PLAN



FLOOR PLAN 1. All dimensions are in imperial and metric, and measured from finish to finish excluding construction tolerances. 2. All materials, dimensions, and drawings are approximate only. 3. Information is subject to change without notice, at developer's absolute discretion. 4. Actual area may vary from the stated area. 5. Drawings not to scale. 6. All images used are for illustrative purposes only and do not represent the actual size, features, specifications, fittings, and furnishings. 7. The developer reserves the right to make revisions / alterations, at it's absolute discretion, without any liability whatsoever.

EMAAR

THE COVE

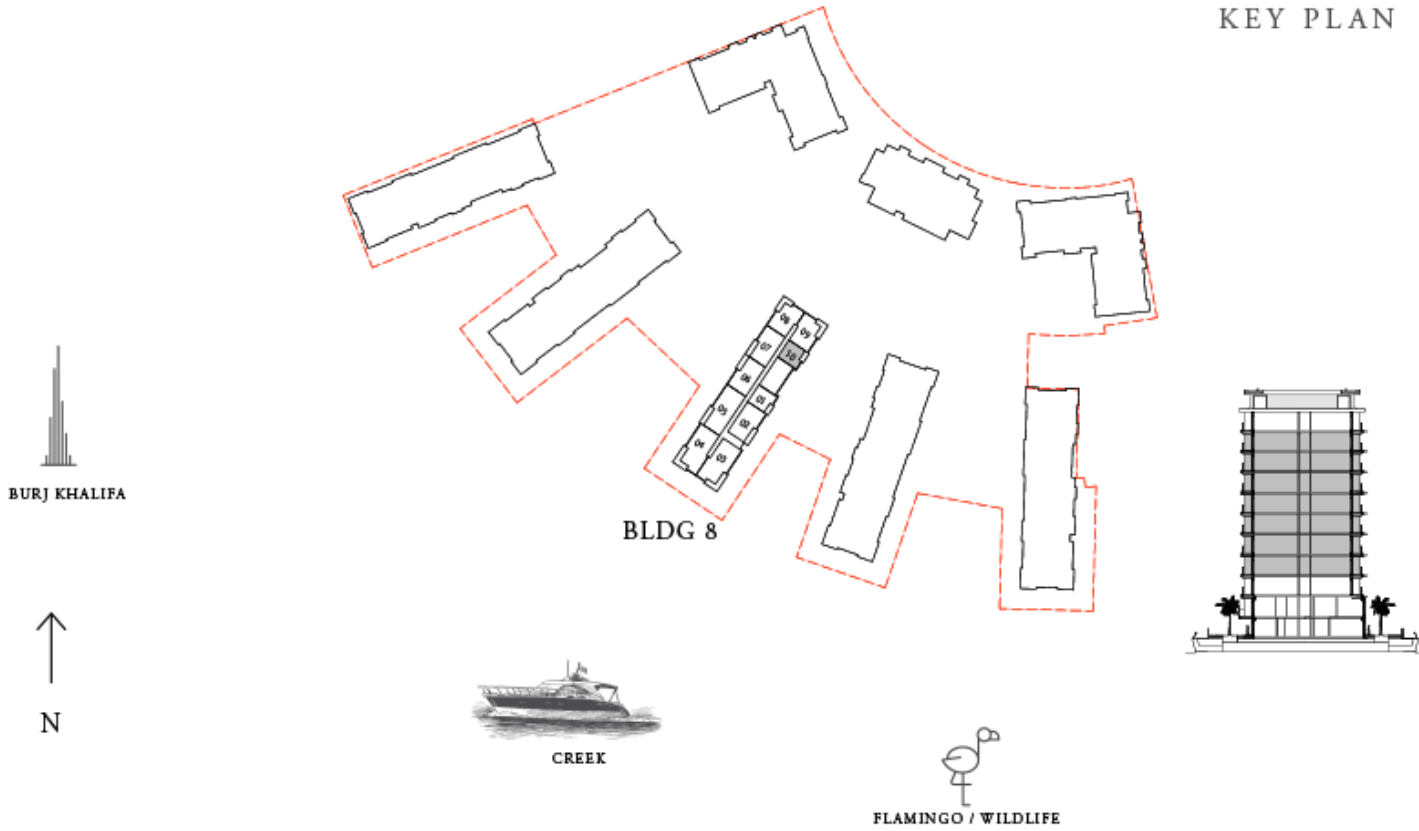
DUBAI CREEK HARBOUR

BUILDING 8 1 BEDROOM

LEVELS 01 - 07 UNIT 10

SUITE AREA	692.55 SQ.FT.	64.34 SQ.M.
BALCONY AREA	92.14 SQ.FT.	8.56 SQ.M.
TOTAL AREA	784.69 SQ.FT.	72.90 SQ.M.

KEY PLAN



FLOOR PLAN 1. All dimensions are in imperial and metric, and measured from finish to finish excluding construction tolerances. 2. All materials, dimensions, and drawings are approximate only. 3. Information is subject to change without notice, at developer's absolute discretion. 4. Actual area may vary from the stated area. 5. Drawings not to scale. 6. All images used are for illustrative purposes only and do not represent the actual size, features, specifications, fittings, and furnishings. 7. The developer reserves the right to make revisions / alterations, at it's absolute discretion, without any liability whatsoever.

THE COVE

DUBAI CREEK HARBOUR

BUILDING 8 4 BEDROOM PENTHOUSE

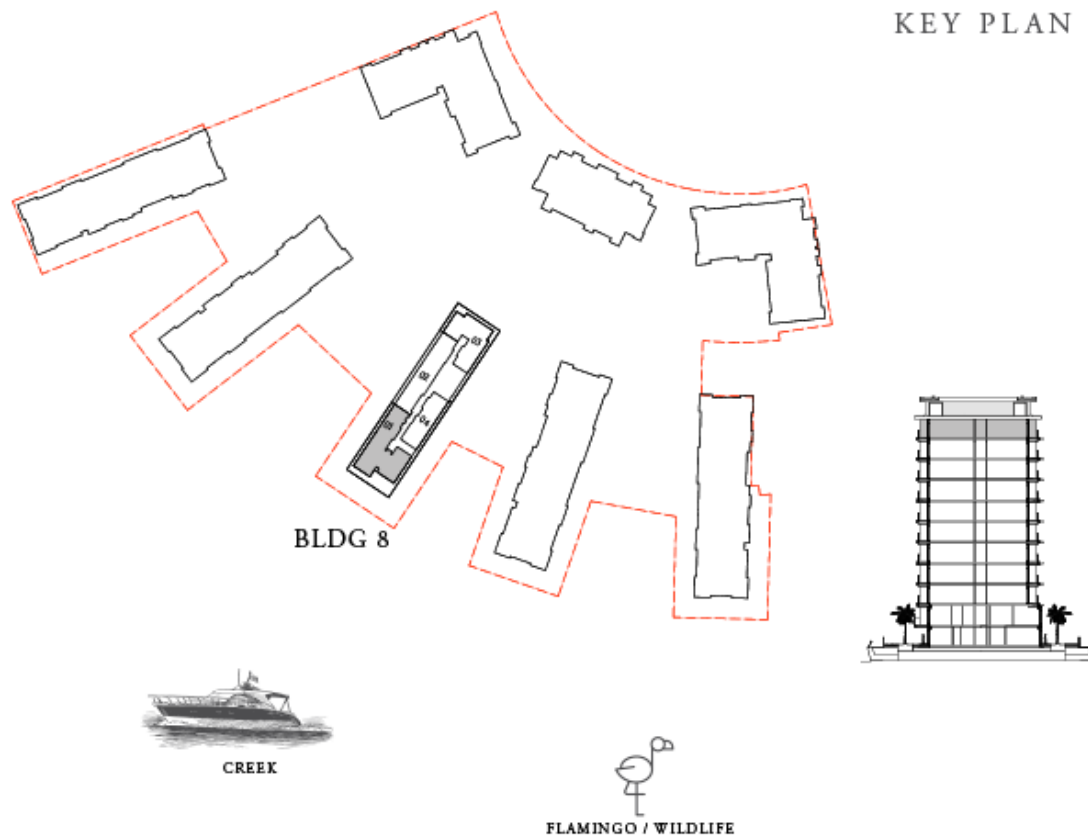
LEVEL 08

UNIT 01

SUITE AREA	3439.82 SQ.FT.	319.57 SQ.M.
BALCONY AREA	1510.82 SQ.FT.	140.36 SQ.M.
TOTAL AREA	4950.64 SQ.FT.	459.93 SQ.M.



KEY PLAN



BURJ KHALIFA



N



CREEK



FLAMINGO / WILDLIFE

FLOOR PLAN 1. All dimensions are in imperial and metric, and measured from finish to finish excluding construction tolerances. 2. All materials, dimensions, and drawings are approximate only. 3. Information is subject to change without notice, at developer's absolute discretion. 4. Actual area may vary from the stated area. 5. Drawings not to scale. 6. All images used are for illustrative purposes only and do not represent the actual size, features, specifications, fittings, and furnishings. 7. The developer reserves the right to make revisions / alterations, at it's absolute discretion, without any liability whatsoever.

EMAAR

THE COVE

DUBAI CREEK HARBOUR

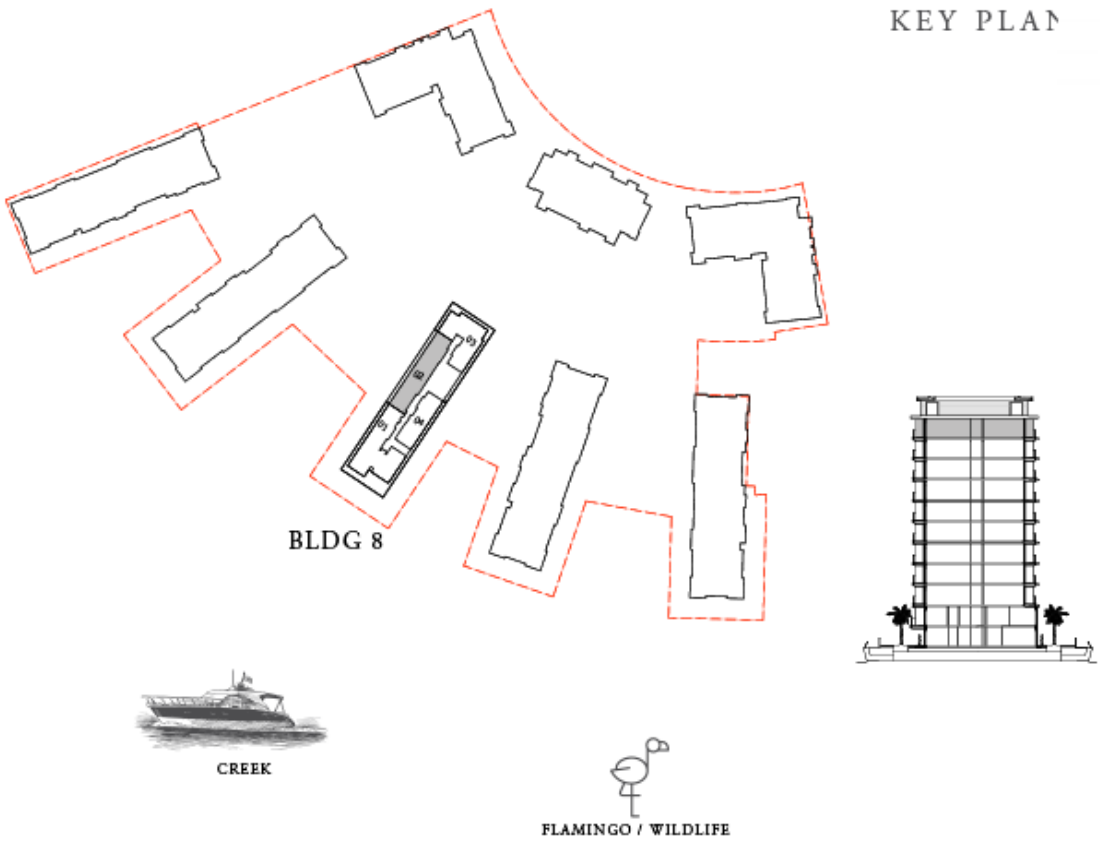
BUILDING 8 4 BEDROOM PENTHOUSE

LEVEL 08 UNIT 02

SUITE AREA	2647.28 SQ.FT.	245.94 SQ.M.
BALCONY AREA	377.17 SQ.FT.	35.04 SQ.M.
TOTAL AREA	3024.45 SQ.FT.	280.98 SQ.M.



KEY PLAN



FLOOR PLAN 1. All dimensions are in imperial and metric, and measured from finish to finish excluding construction tolerances. 2. All materials, dimensions, and drawings are approximate only. 3. Information is subject to change without notice, at developer's absolute discretion. 4. Actual area may vary from the stated area. 5. Drawings not to scale. 6. All images used are for illustrative purposes only and do not represent the actual size, features, specifications, fittings, and furnishings. 7. The developer reserves the right to make revisions / alterations, at it's absolute discretion, without any liability whatsoever.

THE COVE

DUBAI CREEK HARBOUR

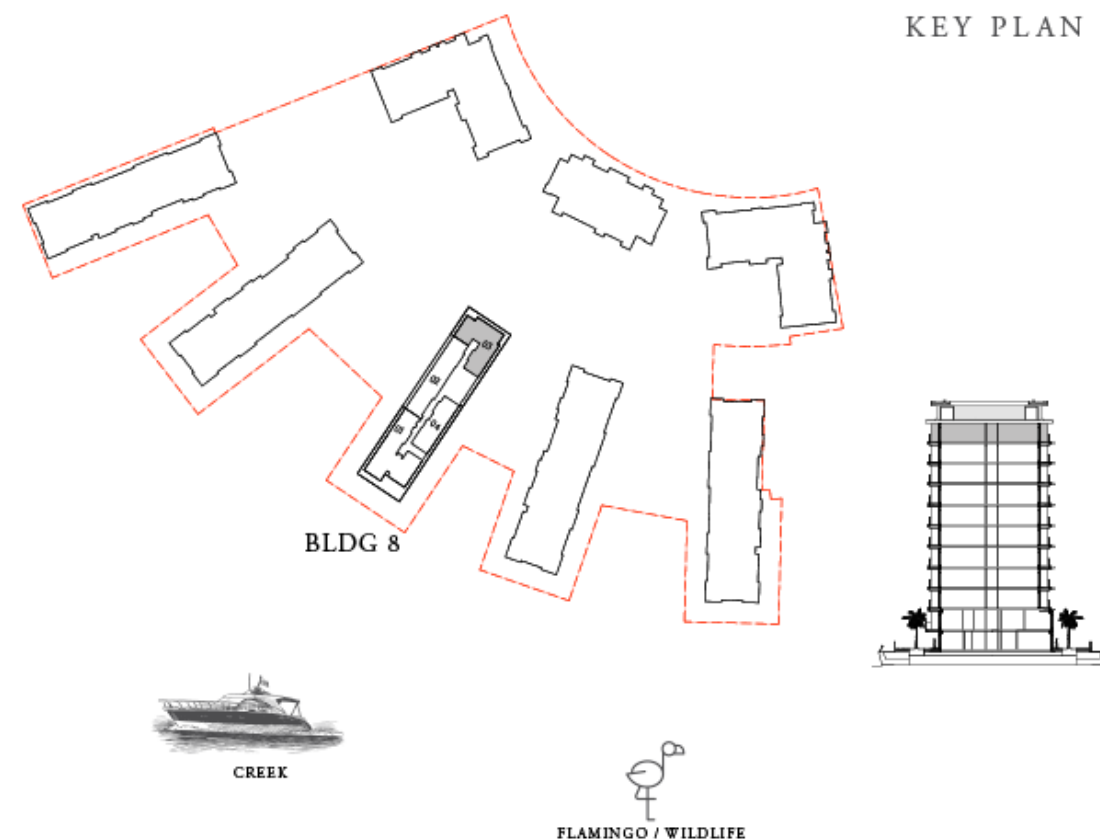
BUILDING 8 3 BEDROOM PENTHOUSE

LEVEL 08

UNIT 03

SUITE AREA	2448.90 SQ.FT.	227.51 SQ.M.
BALCONY AREA	872.09 SQ.FT.	81.02 SQ.M.
TOTAL AREA	3320.99 SQ.FT.	308.53 SQ.M.

KEY PLAN



FLOOR PLAN 1. All dimensions are in imperial and metric, and measured from finish to finish excluding construction tolerances. 2. All materials, dimensions, and drawings are approximate only. 3. Information is subject to change without notice, at developer's absolute discretion. 4. Actual area may vary from the stated area. 5. Drawings not to scale. 6. All images used are for illustrative purposes only and do not represent the actual size, features, specifications, fittings, and furnishings. 7. The developer reserves the right to make revisions / alterations, at it's absolute discretion, without any liability whatsoever.

EMAAR

THE COVE

DUBAI CREEK HARBOUR

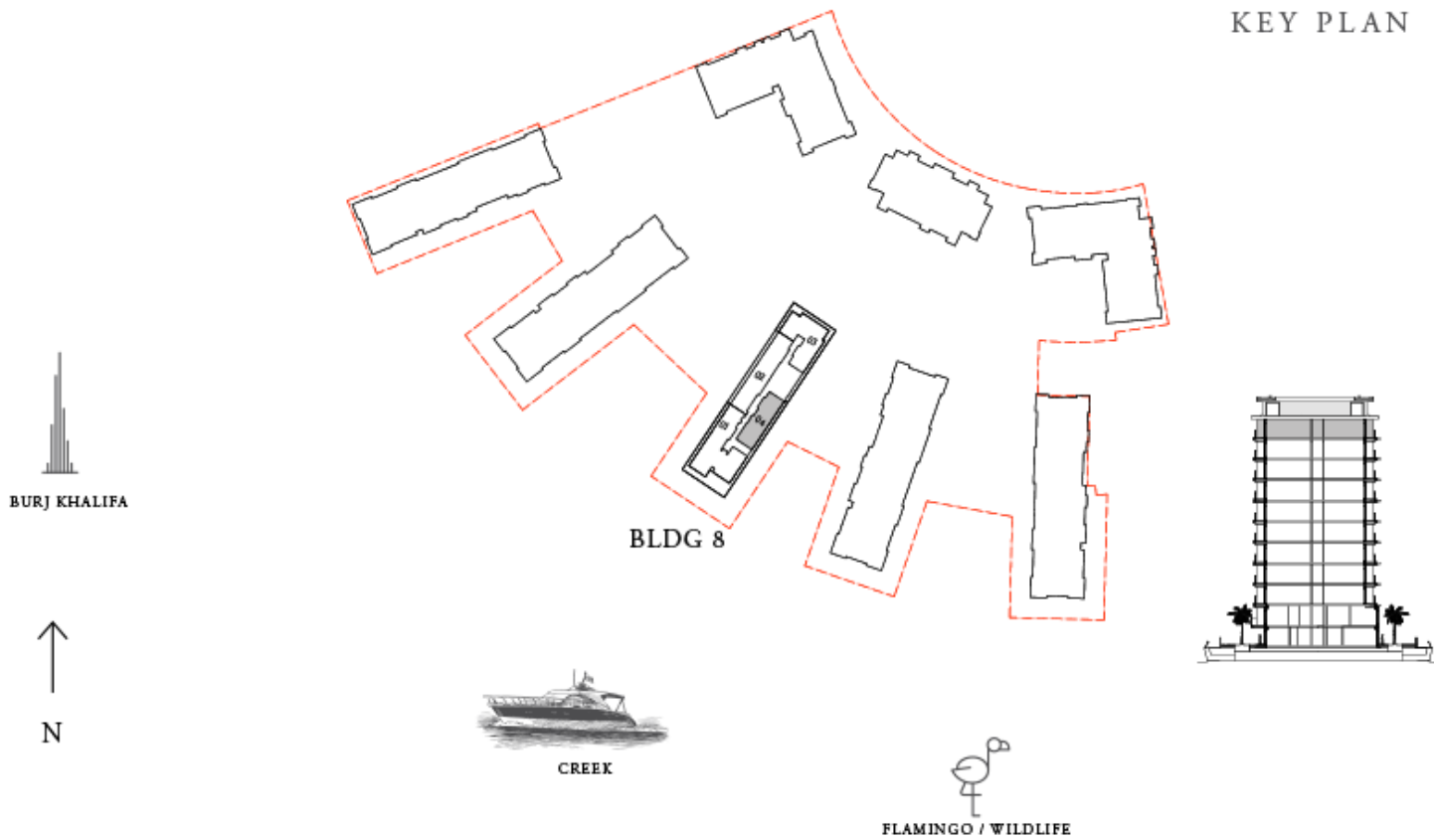
BUILDING 8 3 BEDROOM PENTHOUSE

LEVEL 08 UNIT 04

SUITE AREA	1738.80 SQ.FT.	161.54 SQ.M.
BALCONY AREA	312.05 SQ.FT.	28.99 SQ.M.
TOTAL AREA	2050.85 SQ.FT.	190.53 SQ.M.



KEY PLAN



FLOOR PLAN 1. All dimensions are in imperial and metric, and measured from finish to finish excluding construction tolerances. 2. All materials, dimensions, and drawings are approximate only. 3. Information is subject to change without notice, at developer's absolute discretion. 4. Actual area may vary from the stated area. 5. Drawings not to scale. 6. All images used are for illustrative purposes only and do not represent the actual size, features, specifications, fittings, and furnishings. 7. The developer reserves the right to make revisions / alterations, at it's absolute discretion, without any liability whatsoever.

THE COVE





DUBAI CREEK HARBOUR

FOR MORE INFORMATION PLEASE CONTACT



REAL ESTATE

STAY AHEAD, INVEST SMART

 +971 55 476 7630
 +971 4 368 7878
 info@afsrealestate.com
 www.afsrealestate.com



DUBRICKS

POSSIBILITIES ARE LIMITLESS

 +971 50 674 2020
 +971 4 368 7878
 info@dubricks.com
 www.dubricks.com

EMAAR